

S1 STUDIO / 1 BATH

Interior
617 SF



Patio access may vary in select floorplans

LEASING CENTER 5180 Peachtree Blvd, Chamblee, GA 30341 | 770-525-6657 | ManorChambleeApts.com



ⓘ The developer is RD Manor Chamblee, LLC ("Developer"), which has a license to use the name and trademarks of The Related Group by license. All renderings, photographs, and images, including floor plans, are intended to illustrate generally the lifestyle and ambiance intended for the completed community along with contemplated unit options, but are not intended as a representation or warranty of any specific community activities or completed unit sizes, dimensions, or designs. The unit size, room dimensions, layout and locations of doors, plumbing, and appliances may be changed at the developer's sole discretion and may vary from the floor plans depicted. Furnishings and décor not included with lease.

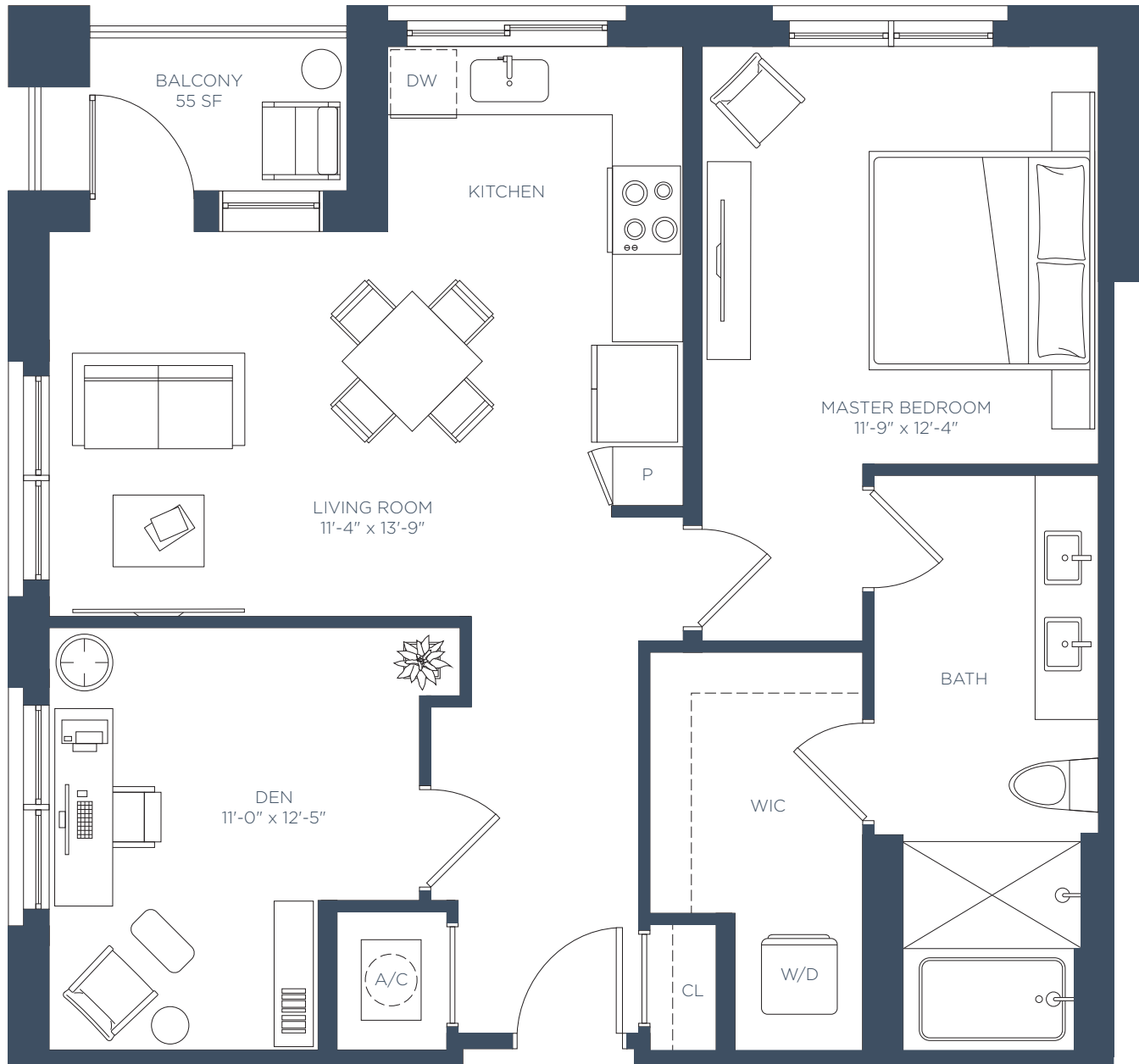
S1.1 STUDIO / 1 BATH

Interior
617 SF



A1 1 BED / 1 BATH

Interior
921 SF



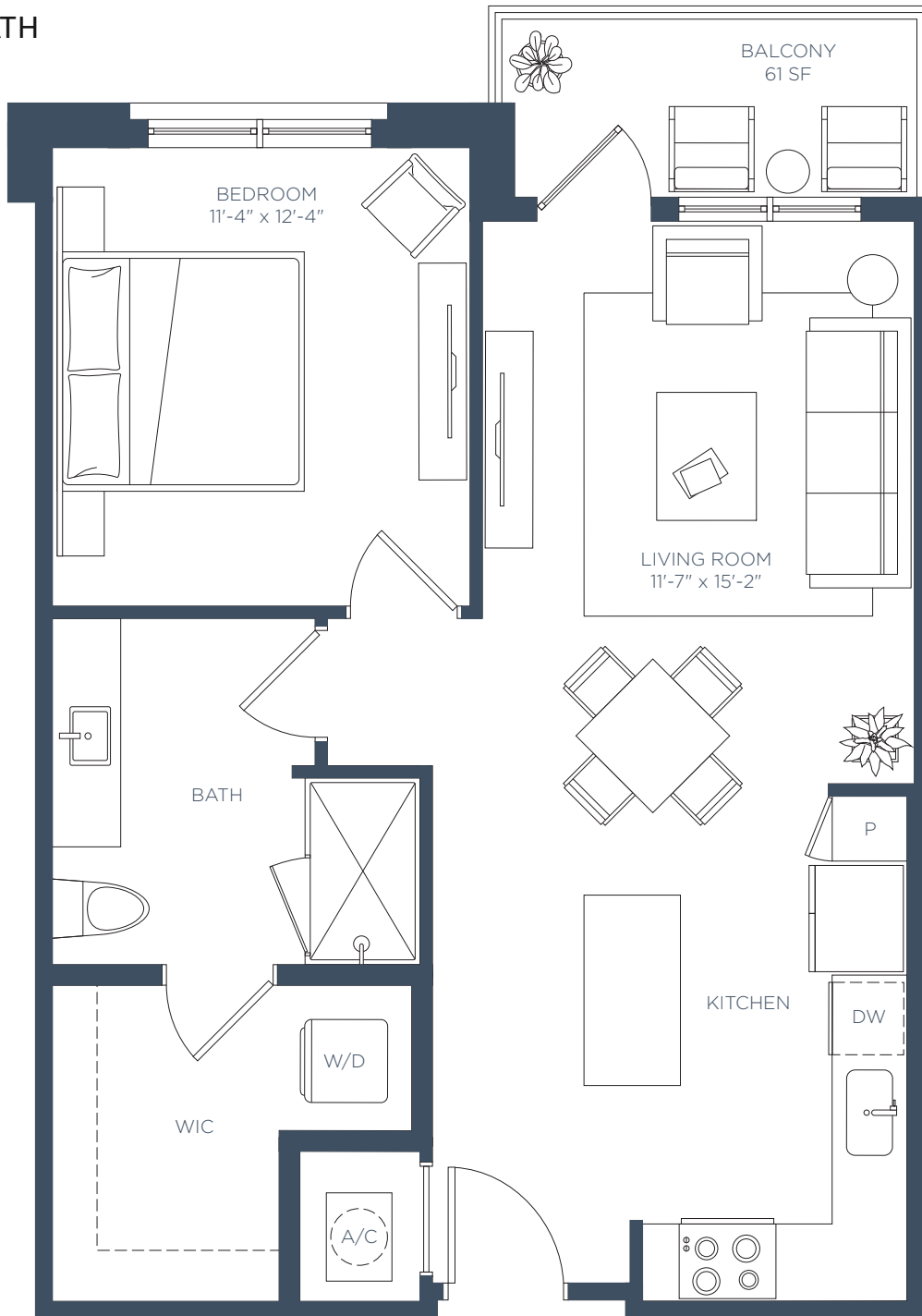
LEASING CENTER 5180 Peachtree Blvd, Chamblee, GA 30341 | 770-525-6657 | ManorChambleeApts.com  RELATED

The developer is RD Manor Chamblee, LLC ("Developer"), which has a license to use the name and trademarks of The Related Group by license. All renderings, photographs, and images, including floor plans, are intended to illustrate generally the lifestyle and ambiance intended for the completed community along with contemplated unit options, but are not intended as a representation or warranty of any specific community activities or completed unit sizes, dimensions, or designs. The unit size, room dimensions, layout and locations of doors, plumbing, and appliances may be changed at the developer's sole discretion and may vary from the floor plans depicted. Furnishings and décor not included with lease.

A2

1 BED / 1 BATH

Interior
743 SF



Floorplan may feature slight kitchen and column variations

LEASING CENTER 5180 Peachtree Blvd, Chamblee, GA 30341 | 770-525-6657 | ManorChambleeApts.com

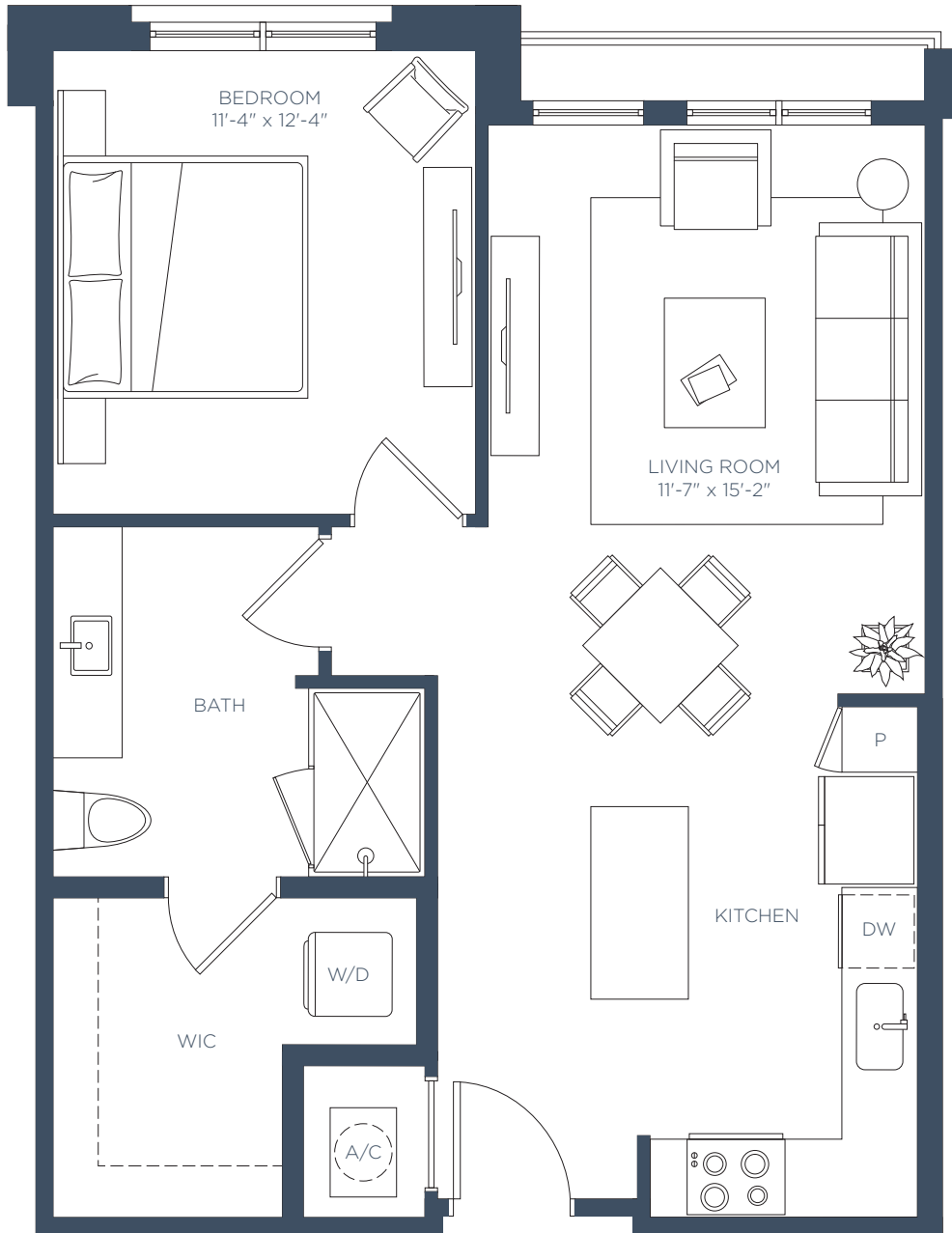


ⓘ The developer is RD Manor Chamblee, LLC ("Developer"), which has a license to use the name and trademarks of The Related Group by license. All renderings, photographs, and images, including floor plans, are intended to illustrate generally the lifestyle and ambiance intended for the completed community along with contemplated unit options, but are not intended as a representation or warranty of any specific community activities or completed unit sizes, dimensions, or designs. The unit size, room dimensions, layout and locations of doors, plumbing, and appliances may be changed at the developer's sole discretion and may vary from the floor plans depicted. Furnishings and décor not included with lease.

A2.1

1 BED / 1 BATH

Interior
742 SF



LEASING CENTER 5180 Peachtree Blvd, Chamblee, GA 30341 | 770-525-6657 | ManorChambleeApts.com

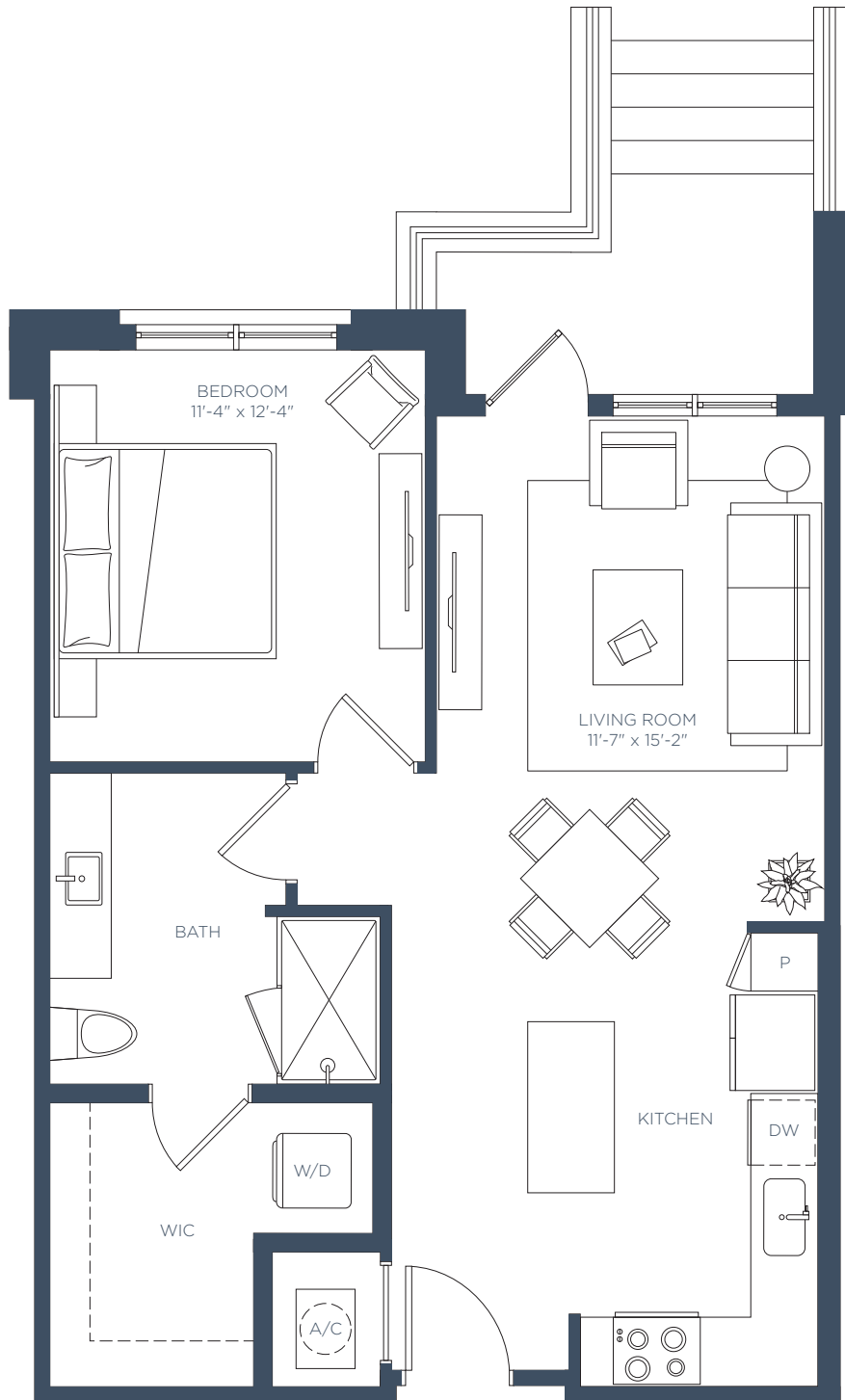


ⓘ The developer is RD Manor Chamblee, LLC ("Developer"), which has a license to use the name and trademarks of The Related Group by license. All renderings, photographs, and images, including floor plans, are intended to illustrate generally the lifestyle and ambiance intended for the completed community along with contemplated unit options, but are not intended as a representation or warranty of any specific community activities or completed unit sizes, dimensions, or designs. The unit size, room dimensions, layout and locations of doors, plumbing, and appliances may be changed at the developer's sole discretion and may vary from the floor plans depicted. Furnishings and décor not included with lease.

A2.2

1 BED / 1 BATH

Interior
742 SF



LEASING CENTER 5180 Peachtree Blvd, Chamblee, GA 30341 | 770-525-6657 | ManorChambleeApts.com

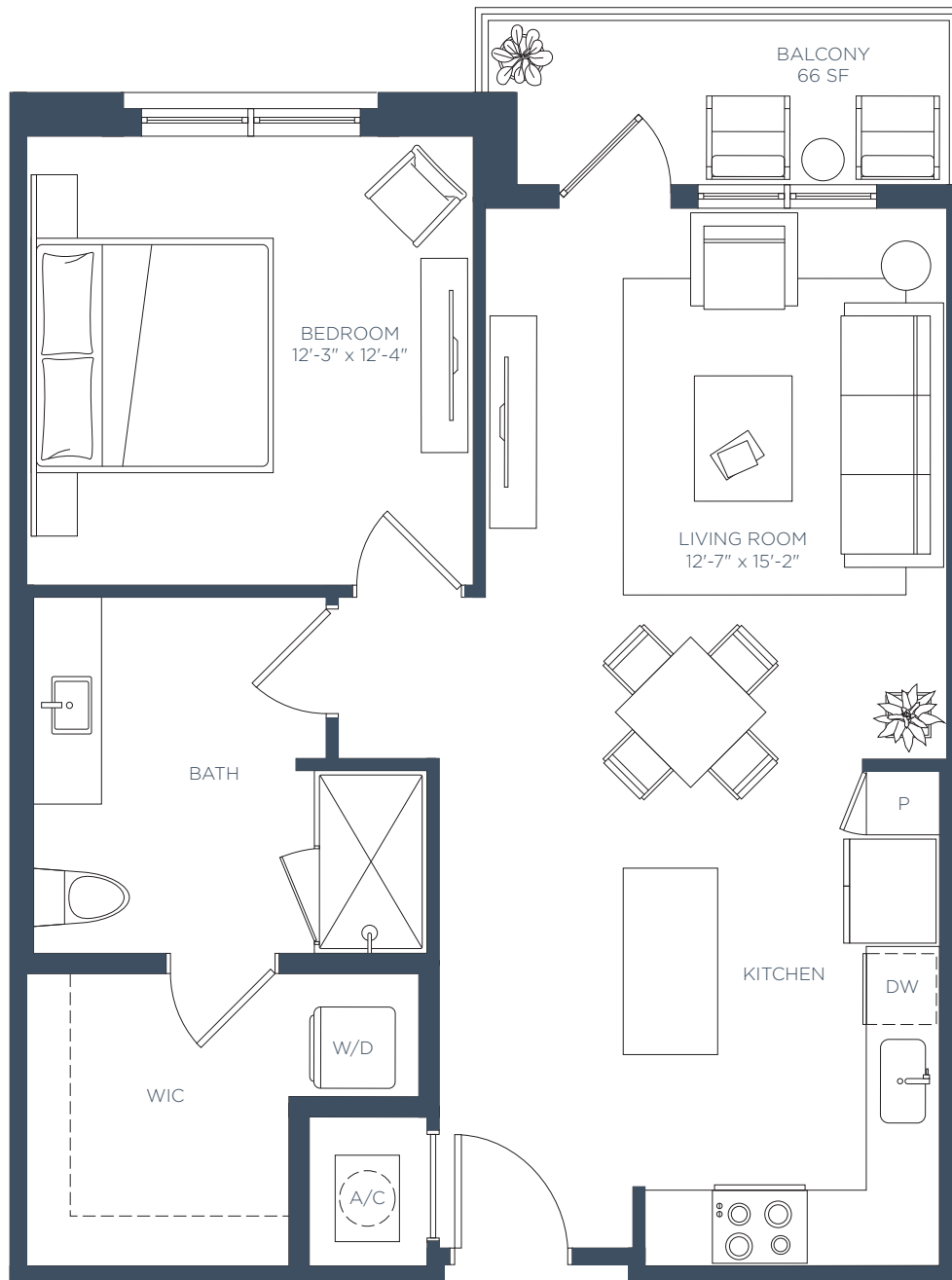


ⓘ The developer is RD Manor Chamblee, LLC ("Developer"), which has a license to use the name and trademarks of The Related Group by license. All renderings, photographs, and images, including floor plans, are intended to illustrate generally the lifestyle and ambiance intended for the completed community along with contemplated unit options, but are not intended as a representation or warranty of any specific community activities or completed unit sizes, dimensions, or designs. The unit size, room dimensions, layout and locations of doors, plumbing, and appliances may be changed at the developer's sole discretion and may vary from the floor plans depicted. Furnishings and décor not included with lease.

A2.3

1 BED / 1 BATH

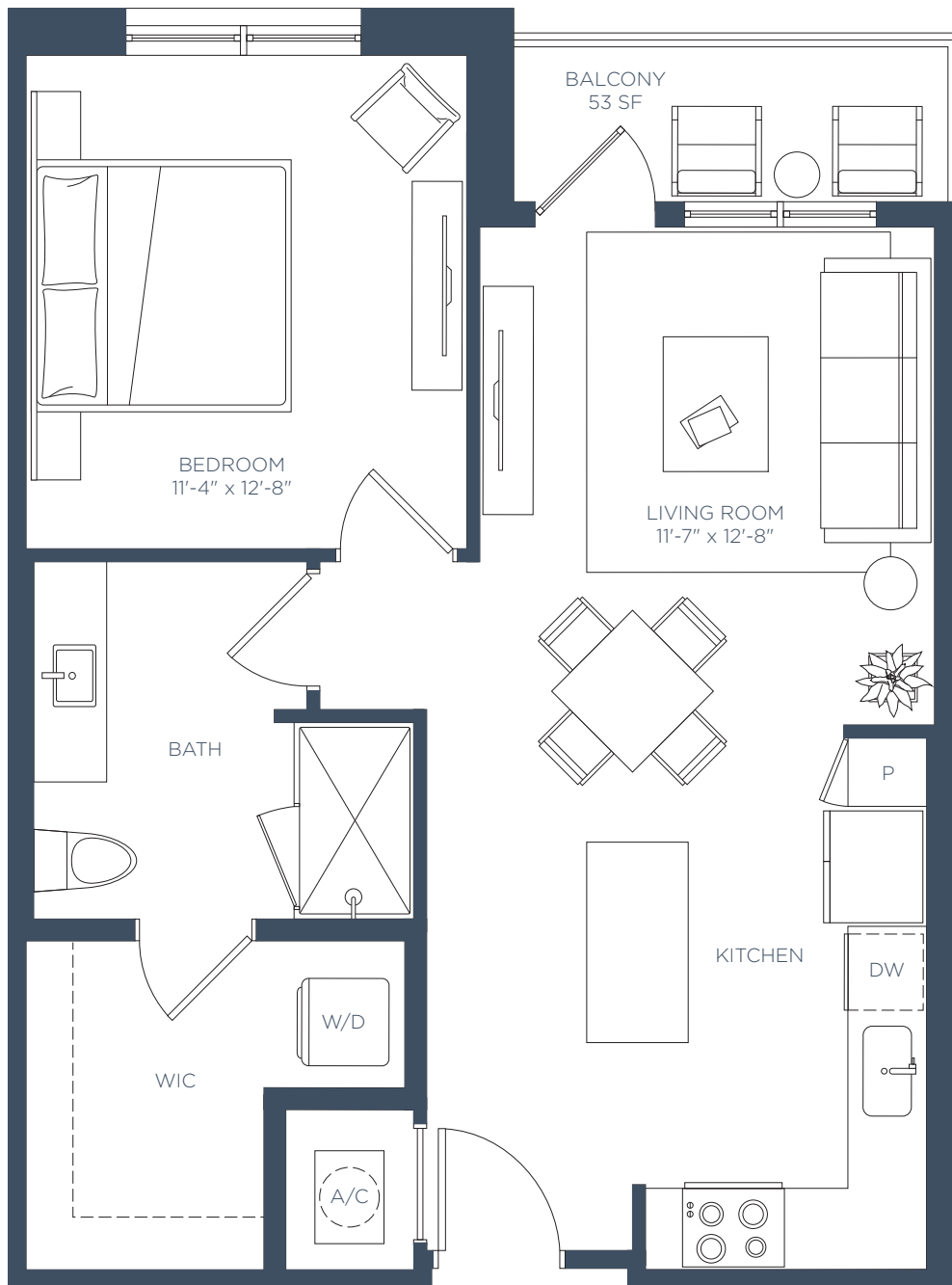
Interior
804 SF



A2.5

1 BED / 1 BATH

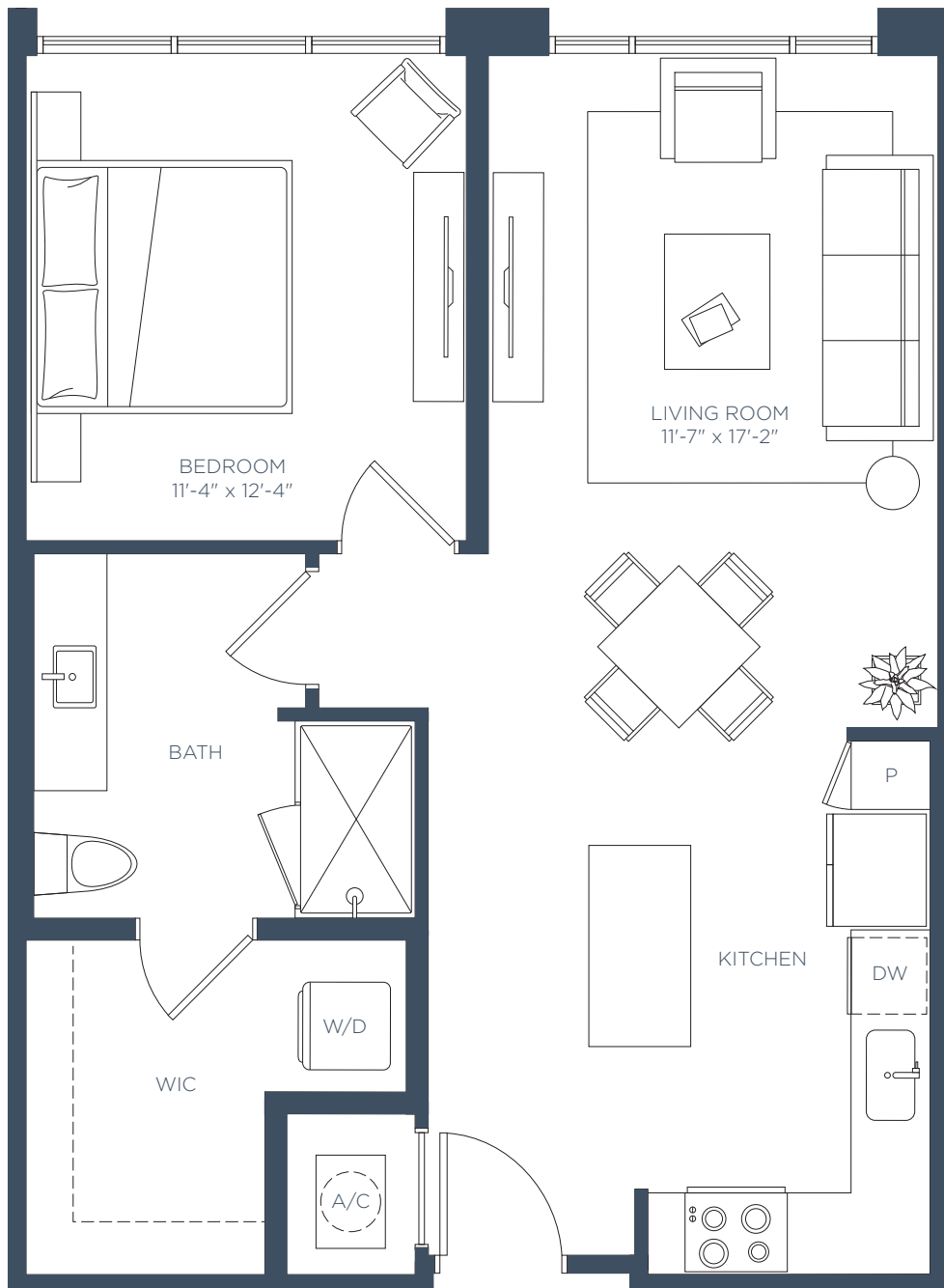
Interior
712 SF



A2.7

1 BED / 1 BATH

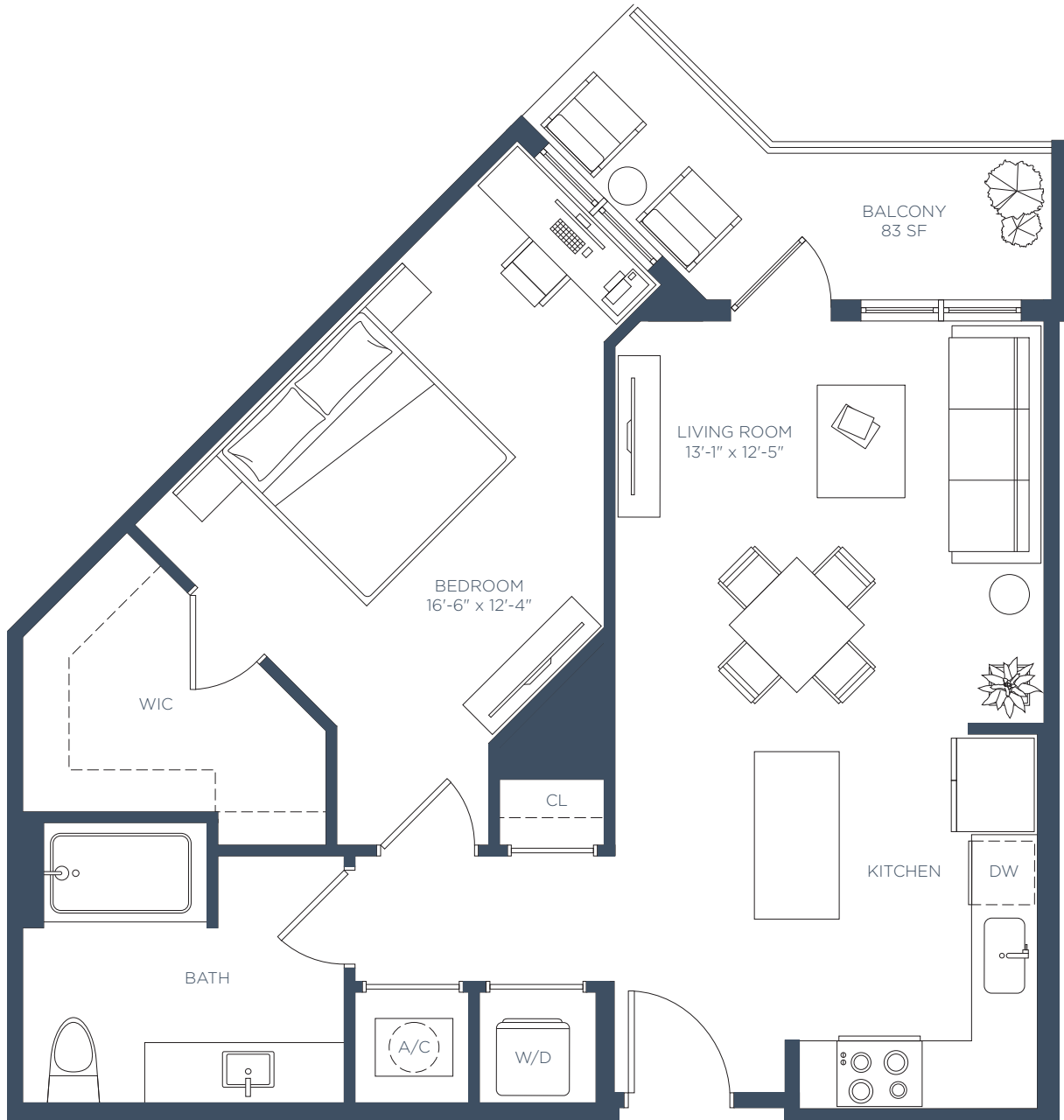
Interior
765 SF



A3

1 BED / 1 BATH

Interior
778 SF



Select styles meet the ADA accessibility standards, please inquire for details

LEASING CENTER 5180 Peachtree Blvd, Chamblee, GA 30341 | 770-525-6657 | ManorChambleeApts.com

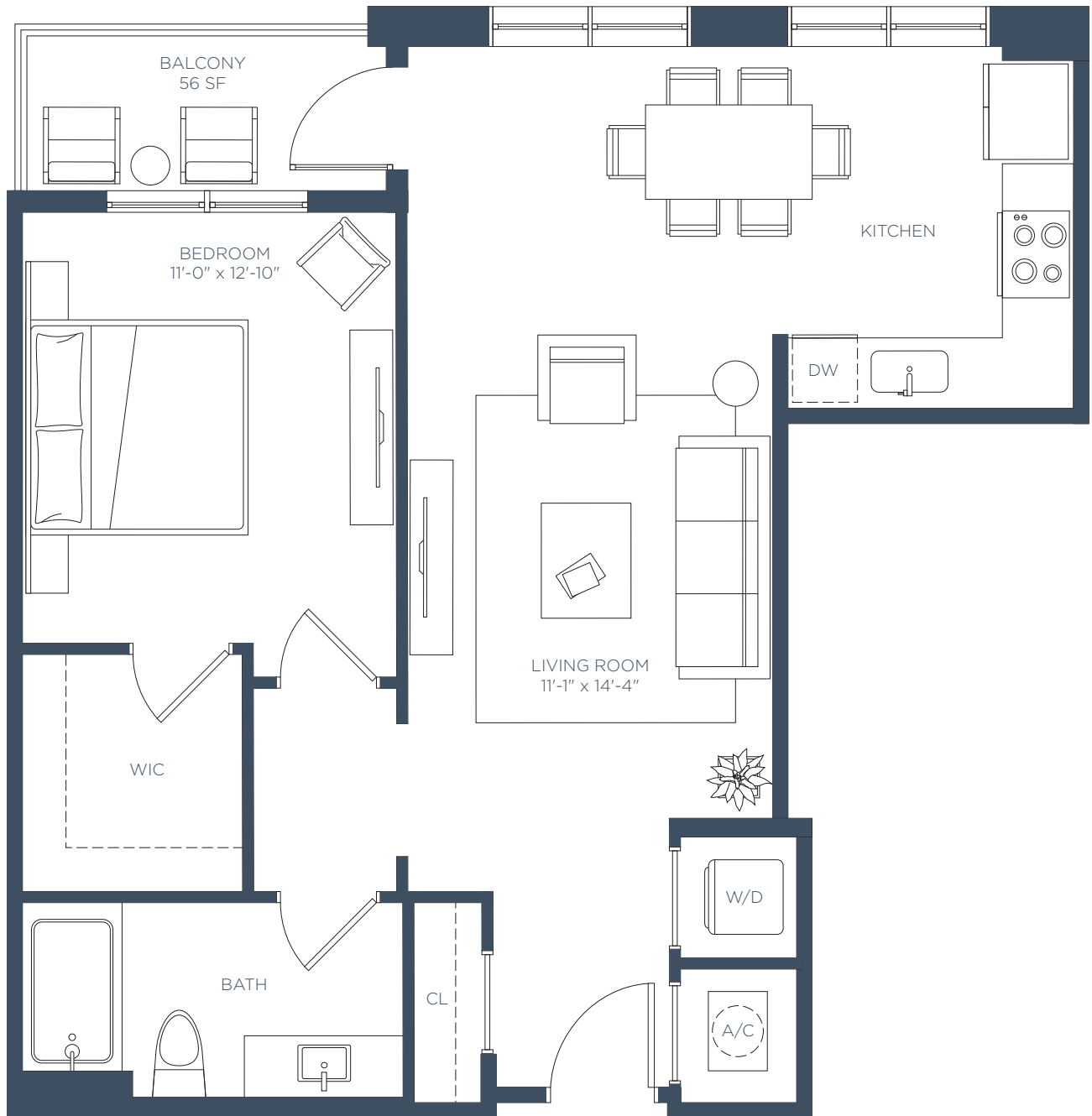


ⓘ The developer is RD Manor Chamblee, LLC ("Developer"), which has a license to use the name and trademarks of The Related Group by license. All renderings, photographs, and images, including floor plans, are intended to illustrate generally the lifestyle and ambiance intended for the completed community along with contemplated unit options, but are not intended as a representation or warranty of any specific community activities or completed unit sizes, dimensions, or designs. The unit size, room dimensions, layout and locations of doors, plumbing, and appliances may be changed at the developer's sole discretion and may vary from the floor plans depicted. Furnishings and décor not included with lease.

A4

1 BED / 1 BATH

Interior
812 SF



LEASING CENTER 5180 Peachtree Blvd, Chamblee, GA 30341 | 770-525-6657 | ManorChambleeApts.com

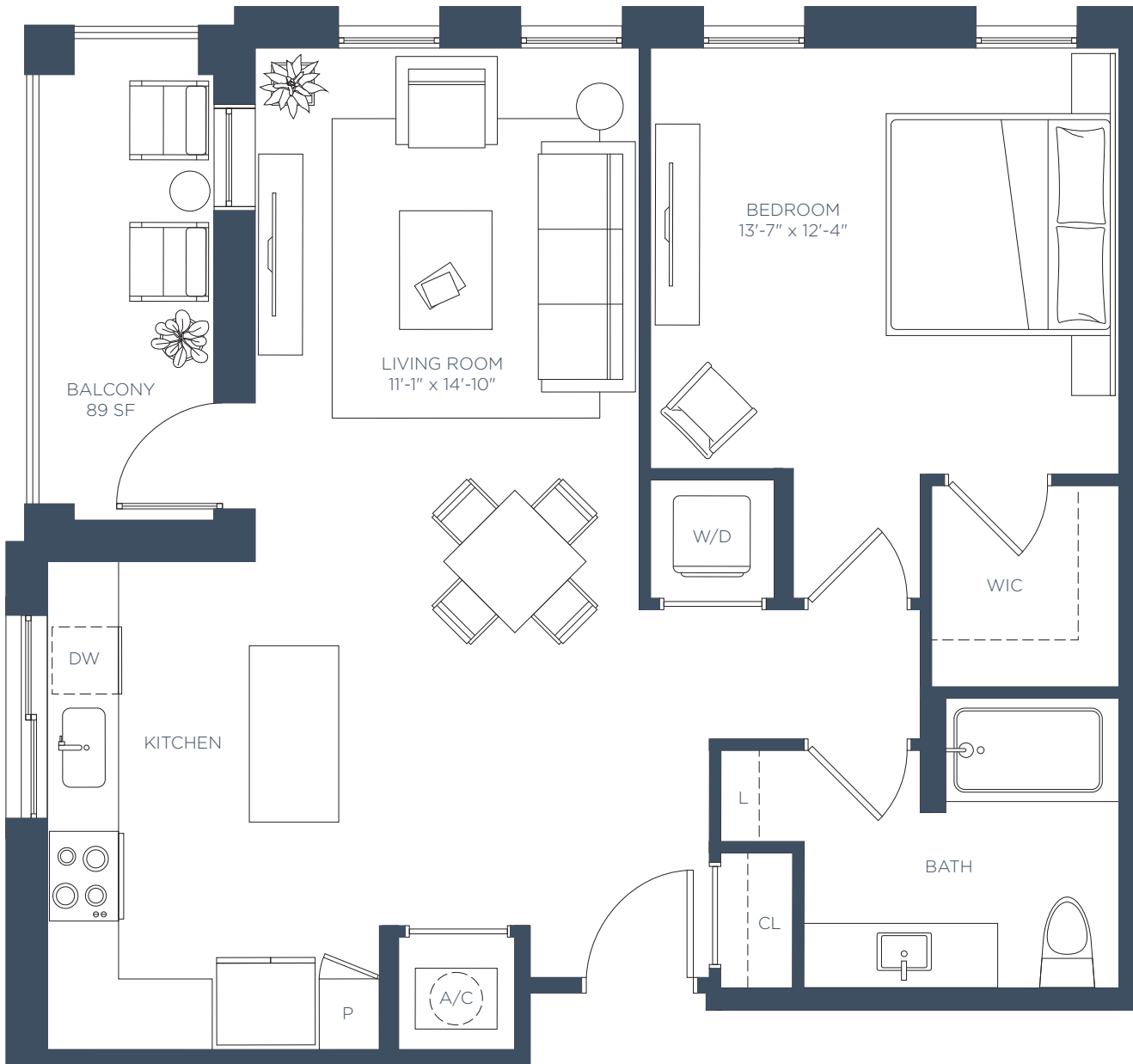


ⓘ The developer is RD Manor Chamblee, LLC ("Developer"), which has a license to use the name and trademarks of The Related Group by license. All renderings, photographs, and images, including floor plans, are intended to illustrate generally the lifestyle and ambiance intended for the completed community along with contemplated unit options, but are not intended as a representation or warranty of any specific community activities or completed unit sizes, dimensions, or designs. The unit size, room dimensions, layout and locations of doors, plumbing, and appliances may be changed at the developer's sole discretion and may vary from the floor plans depicted. Furnishings and décor not included with lease.

A5

1 BED / 1 BATH

Interior
839 SF



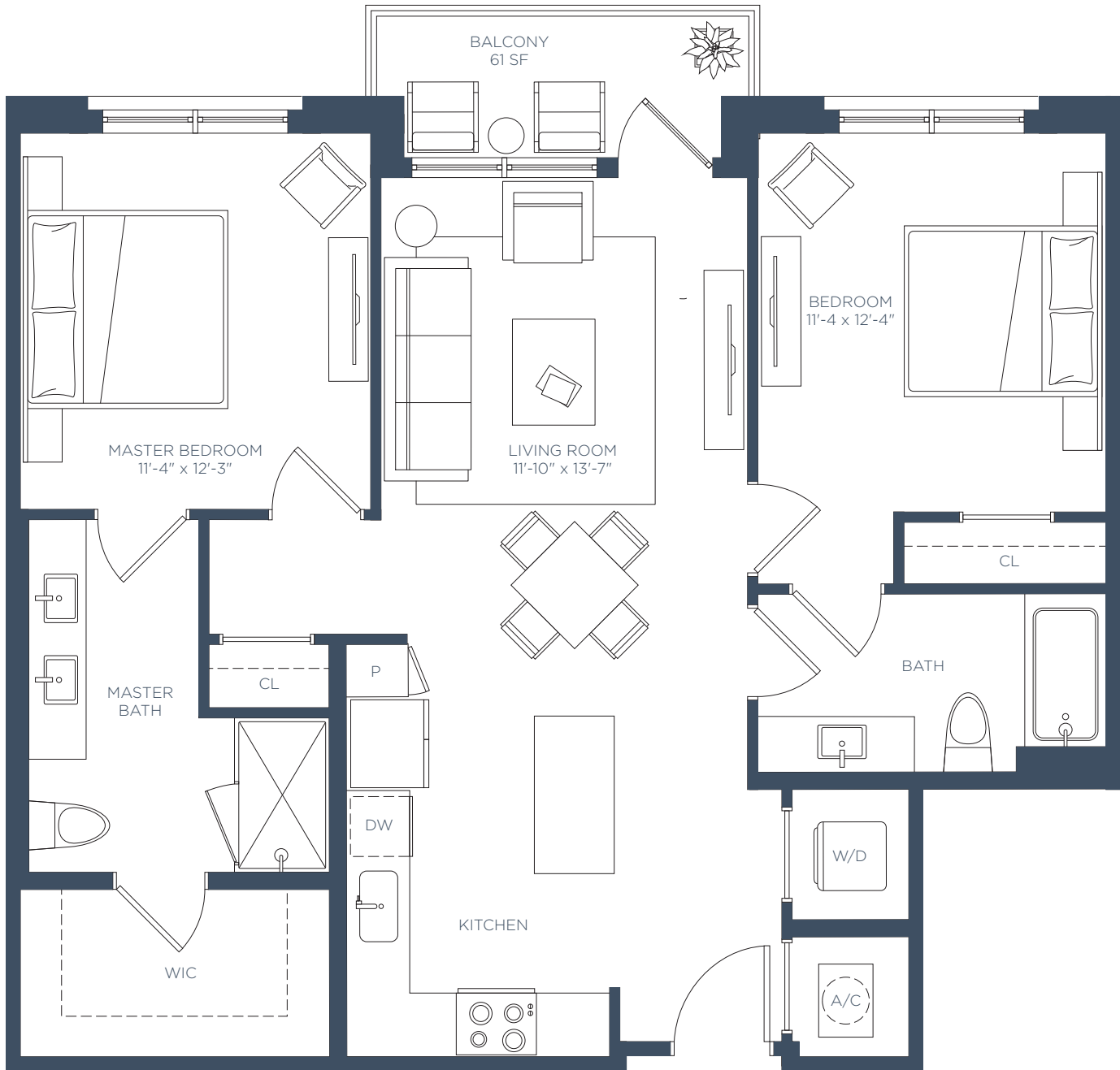
LEASING CENTER 5180 Peachtree Blvd, Chamblee, GA 30341 | 770-525-6657 | ManorChambleeApts.com  RELATED

The developer is RD Manor Chamblee, LLC ("Developer"), which has a license to use the name and trademarks of The Related Group by license. All renderings, photographs, and images, including floor plans, are intended to illustrate generally the lifestyle and ambiance intended for the completed community along with contemplated unit options, but are not intended as a representation or warranty of any specific community activities or completed unit sizes, dimensions, or designs. The unit size, room dimensions, layout and locations of doors, plumbing, and appliances may be changed at the developer's sole discretion and may vary from the floor plans depicted. Furnishings and décor not included with lease.

B1

2 BEDS / 2 BATHS

Interior
1,037 SF



LEASING CENTER 5180 Peachtree Blvd, Chamblee, GA 30341 | 770-525-6657 | ManorChambleeApts.com

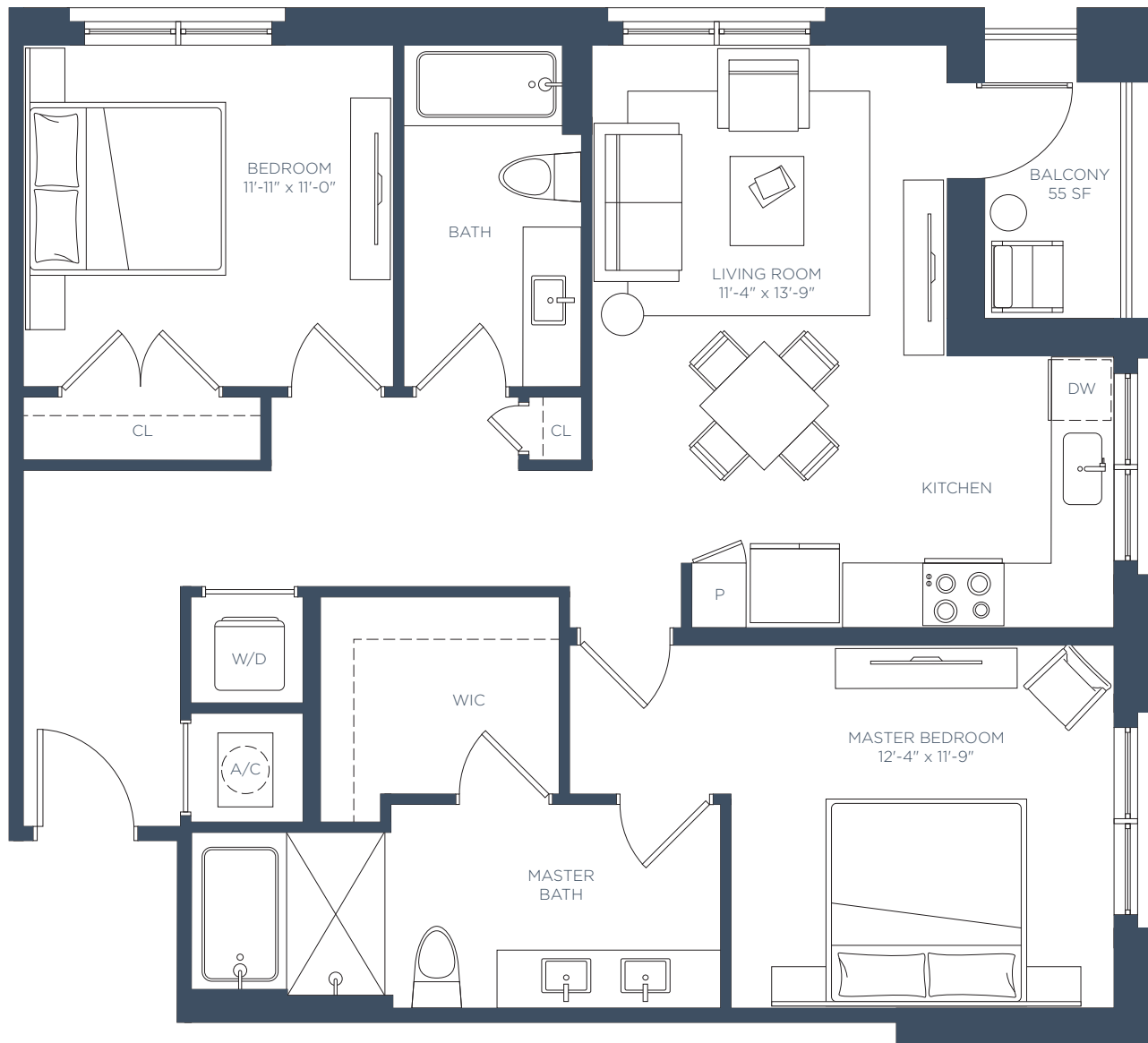


ⓘ The developer is RD Manor Chamblee, LLC ("Developer"), which has a license to use the name and trademarks of The Related Group by license. All renderings, photographs, and images, including floor plans, are intended to illustrate generally the lifestyle and ambiance intended for the completed community along with contemplated unit options, but are not intended as a representation or warranty of any specific community activities or completed unit sizes, dimensions, or designs. The unit size, room dimensions, layout and locations of doors, plumbing, and appliances may be changed at the developer's sole discretion and may vary from the floor plans depicted. Furnishings and décor not included with lease.

B2

2 BEDS / 2 BATHS

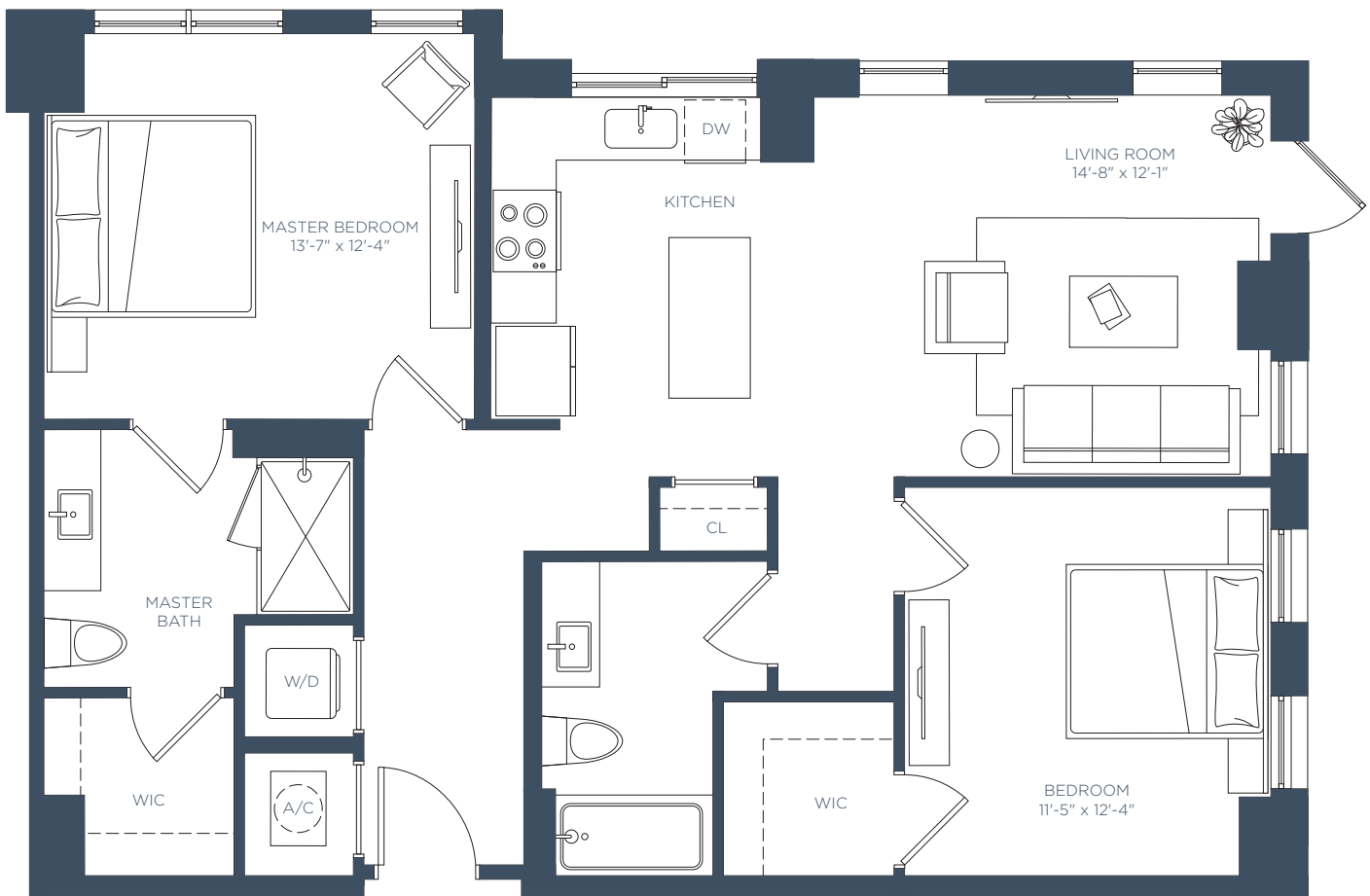
Interior
1,065 SF



B3

2 BEDS / 2 BATHS

Interior
1,070 SF



LEASING CENTER 5180 Peachtree Blvd, Chamblee, GA 30341 | 770-525-6657 | ManorChambleeApts.com

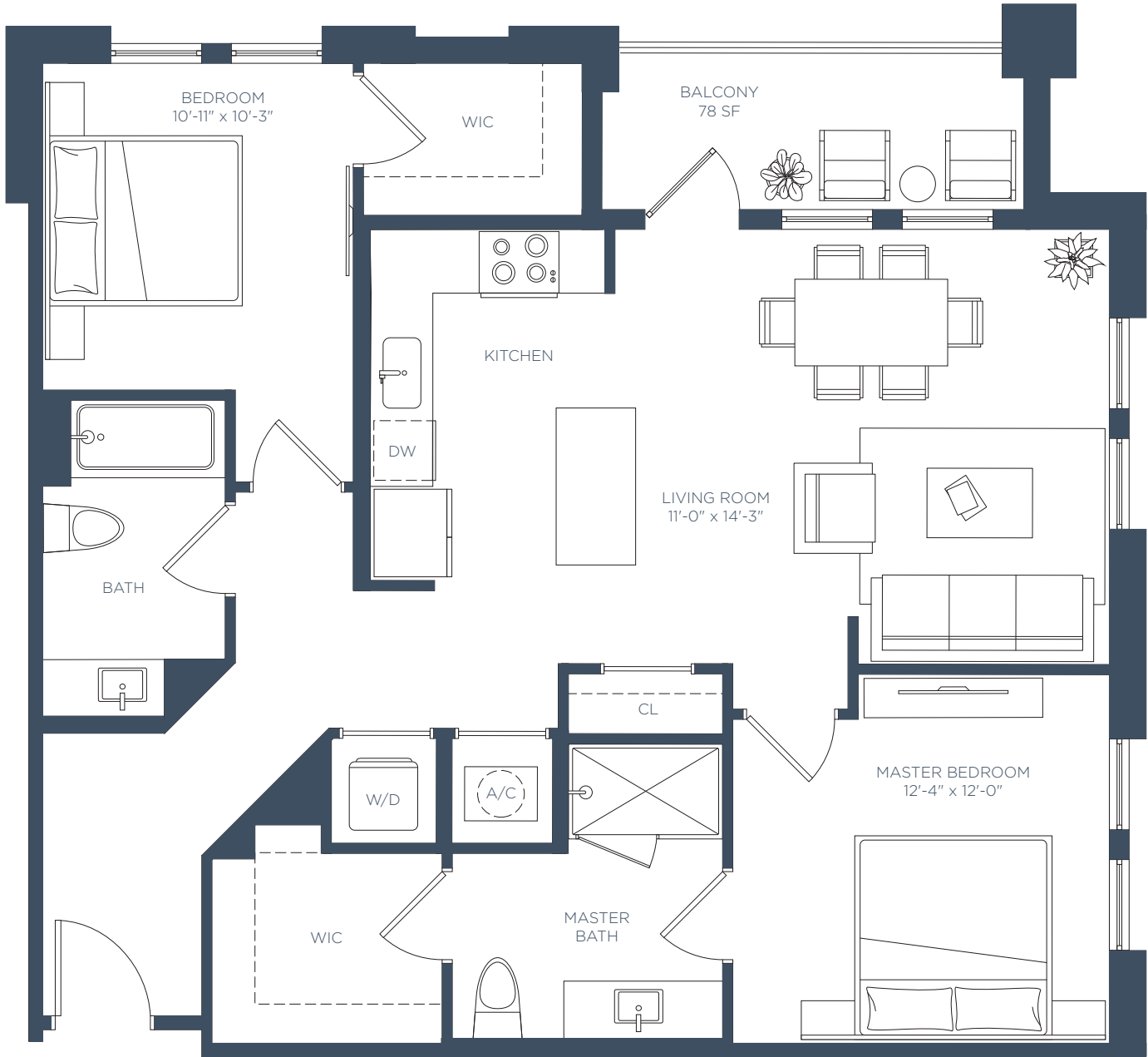


🏠 The developer is RD Manor Chamblee, LLC ("Developer"), which has a license to use the name and trademarks of The Related Group by license. All renderings, photographs, and images, including floor plans, are intended to illustrate generally the lifestyle and ambiance intended for the completed community along with contemplated unit options, but are not intended as a representation or warranty of any specific community activities or completed unit sizes, dimensions, or designs. The unit size, room dimensions, layout and locations of doors, plumbing, and appliances may be changed at the developer's sole discretion and may vary from the floor plans depicted. Furnishings and décor not included with lease.

B4

2 BEDS / 2 BATHS

Interior
1,088 SF



LEASING CENTER 5180 Peachtree Blvd, Chamblee, GA 30341 | 770-525-6657 | ManorChambleeApts.com

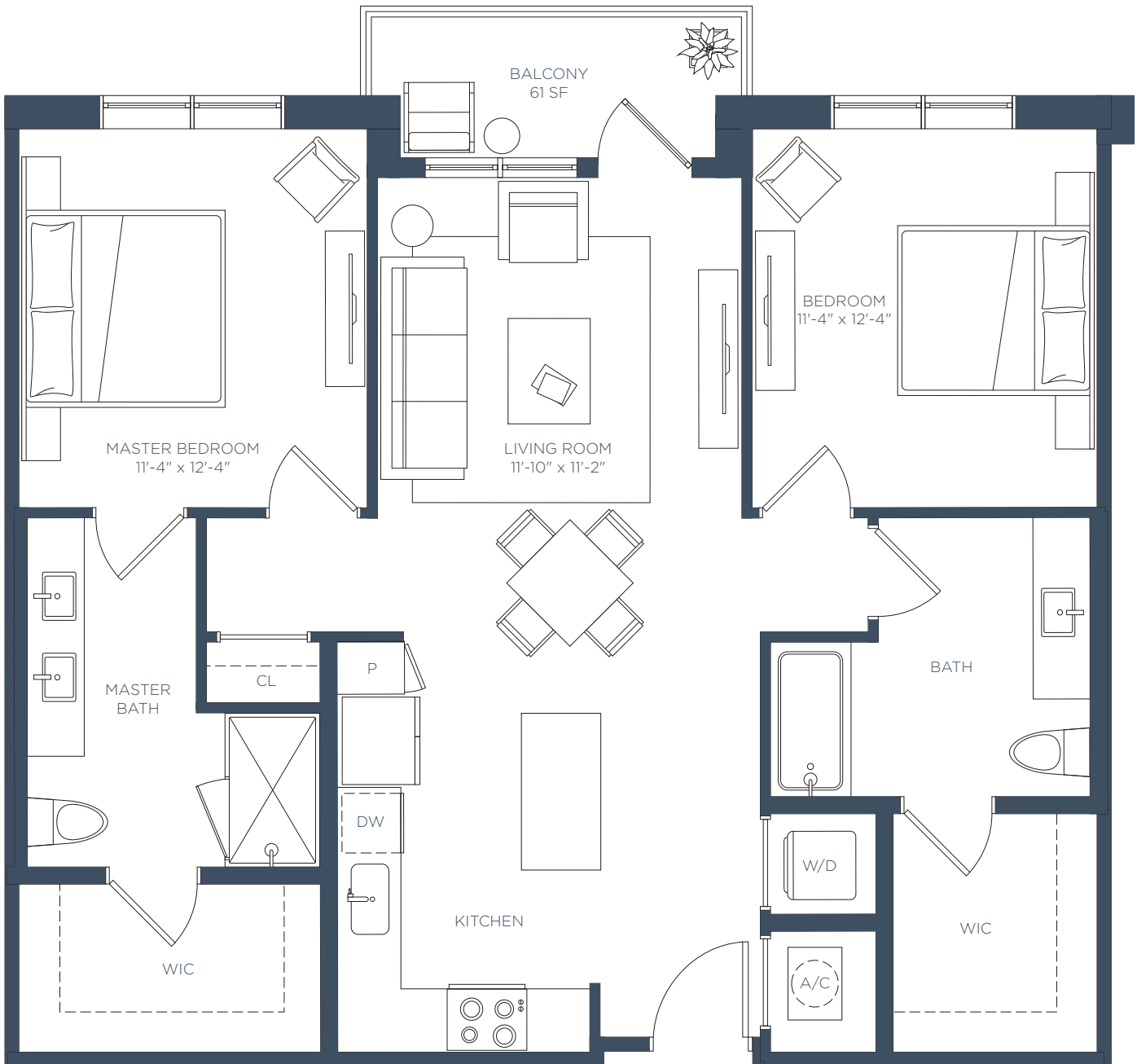


ⓘ The developer is RD Manor Chamblee, LLC ("Developer"), which has a license to use the name and trademarks of The Related Group by license. All renderings, photographs, and images, including floor plans, are intended to illustrate generally the lifestyle and ambiance intended for the completed community along with contemplated unit options, but are not intended as a representation or warranty of any specific community activities or completed unit sizes, dimensions, or designs. The unit size, room dimensions, layout and locations of doors, plumbing, and appliances may be changed at the developer's sole discretion and may vary from the floor plans depicted. Furnishings and décor not included with lease.

B5

2 BEDS / 2 BATHS

Interior
1,096 SF



Select styles meet the ADA accessibility standards, please inquire for details

LEASING CENTER 5180 Peachtree Blvd, Chamblee, GA 30341 | 770-525-6657 | ManorChambleeApts.com



The developer is RD Manor Chamblee, LLC ("Developer"), which has a license to use the name and trademarks of The Related Group by license. All renderings, photographs, and images, including floor plans, are intended to illustrate generally the lifestyle and ambiance intended for the completed community along with contemplated unit options, but are not intended as a representation or warranty of any specific community activities or completed unit sizes, dimensions, or designs. The unit size, room dimensions, layout and locations of doors, plumbing, and appliances may be changed at the developer's sole discretion and may vary from the floor plans depicted. Furnishings and décor not included with lease.

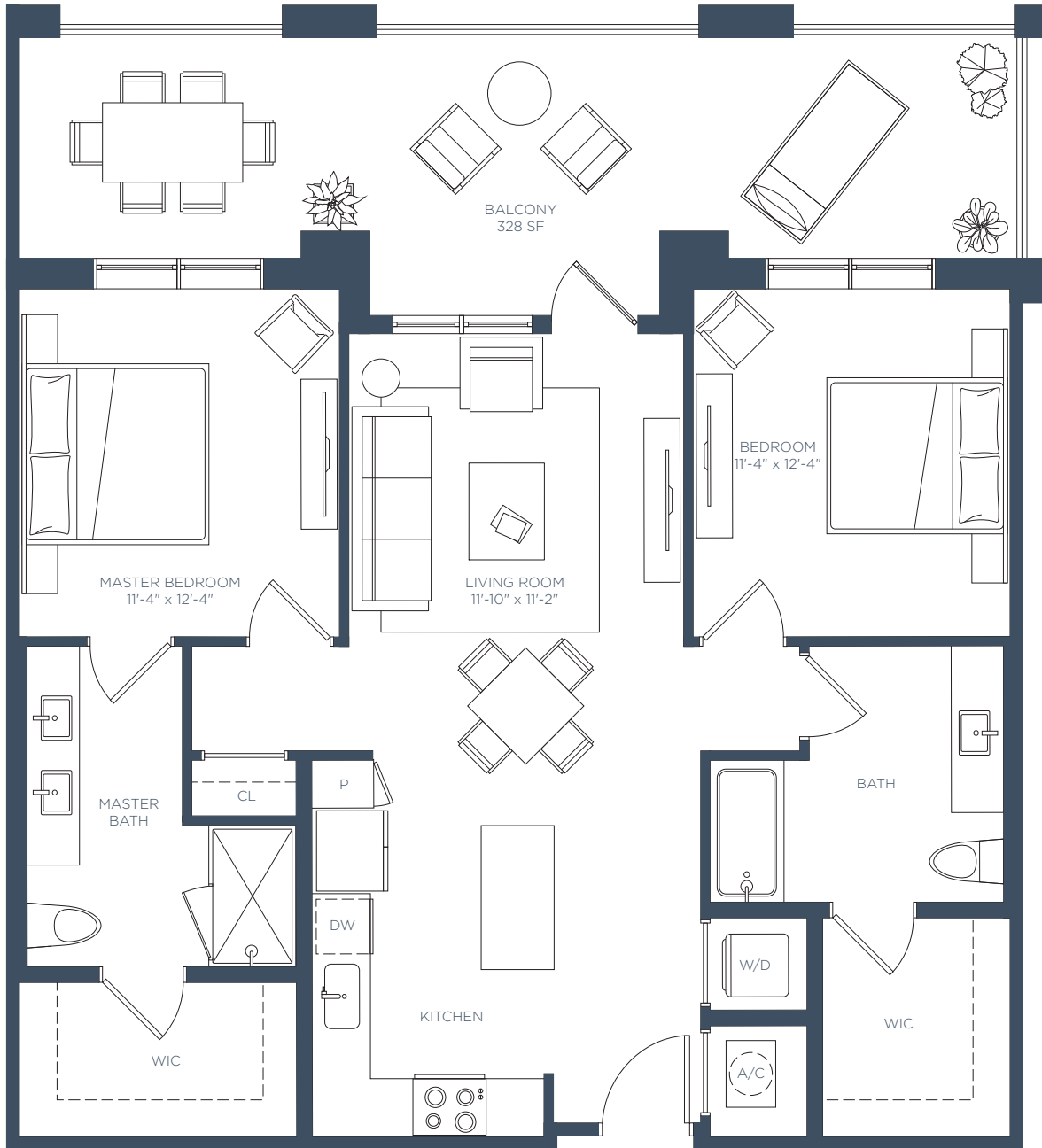
MANOR

RENTAL EVOLUTION
CHAMBLEE

B5.1

2 BEDS / 2 BATHS

Interior
1,096 SF



LEASING CENTER 5180 Peachtree Blvd, Chamblee, GA 30341 | 770-525-6657 | ManorChambleeApts.com

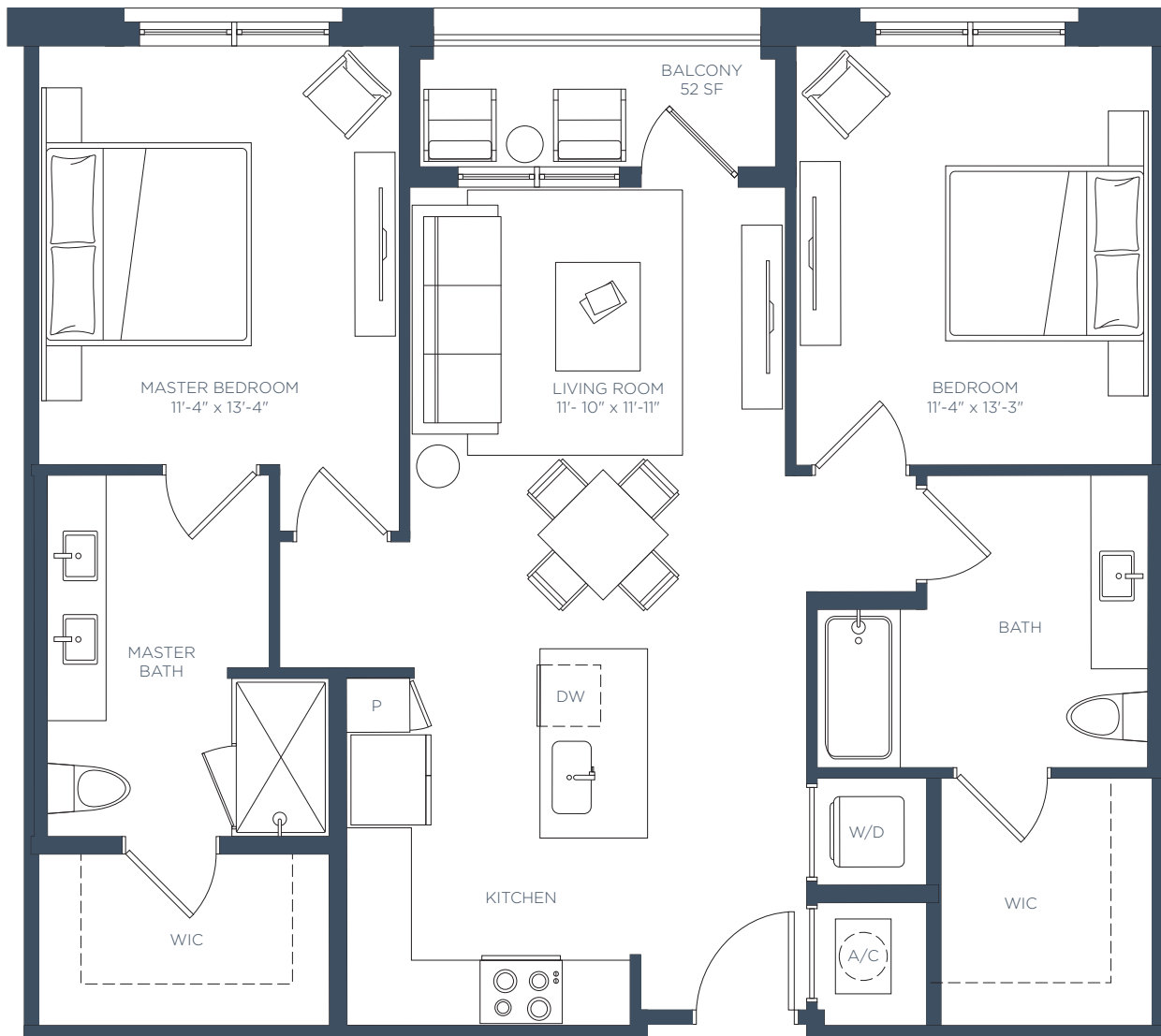


ⓘ The developer is RD Manor Chamblee, LLC ("Developer"), which has a license to use the name and trademarks of The Related Group by license. All renderings, photographs, and images, including floor plans, are intended to illustrate generally the lifestyle and ambiance intended for the completed community along with contemplated unit options, but are not intended as a representation or warranty of any specific community activities or completed unit sizes, dimensions, or designs. The unit size, room dimensions, layout and locations of doors, plumbing, and appliances may be changed at the developer's sole discretion and may vary from the floor plans depicted. Furnishings and décor not included with lease.

B5.2

2 BEDS / 2 BATHS

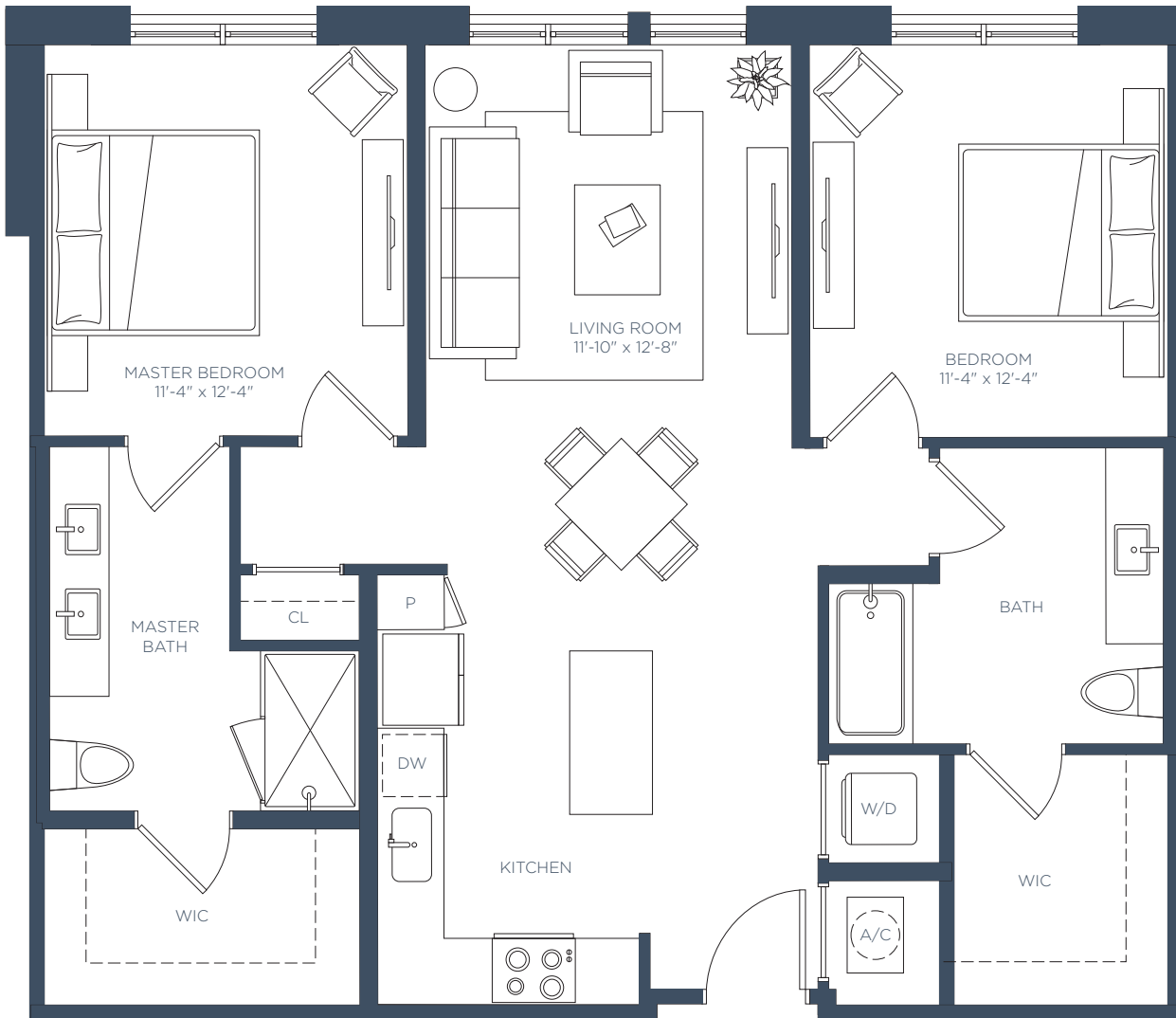
Interior
1,097 SF



B5.3

2 BEDS / 2 BATHS

Interior
1,113 SF

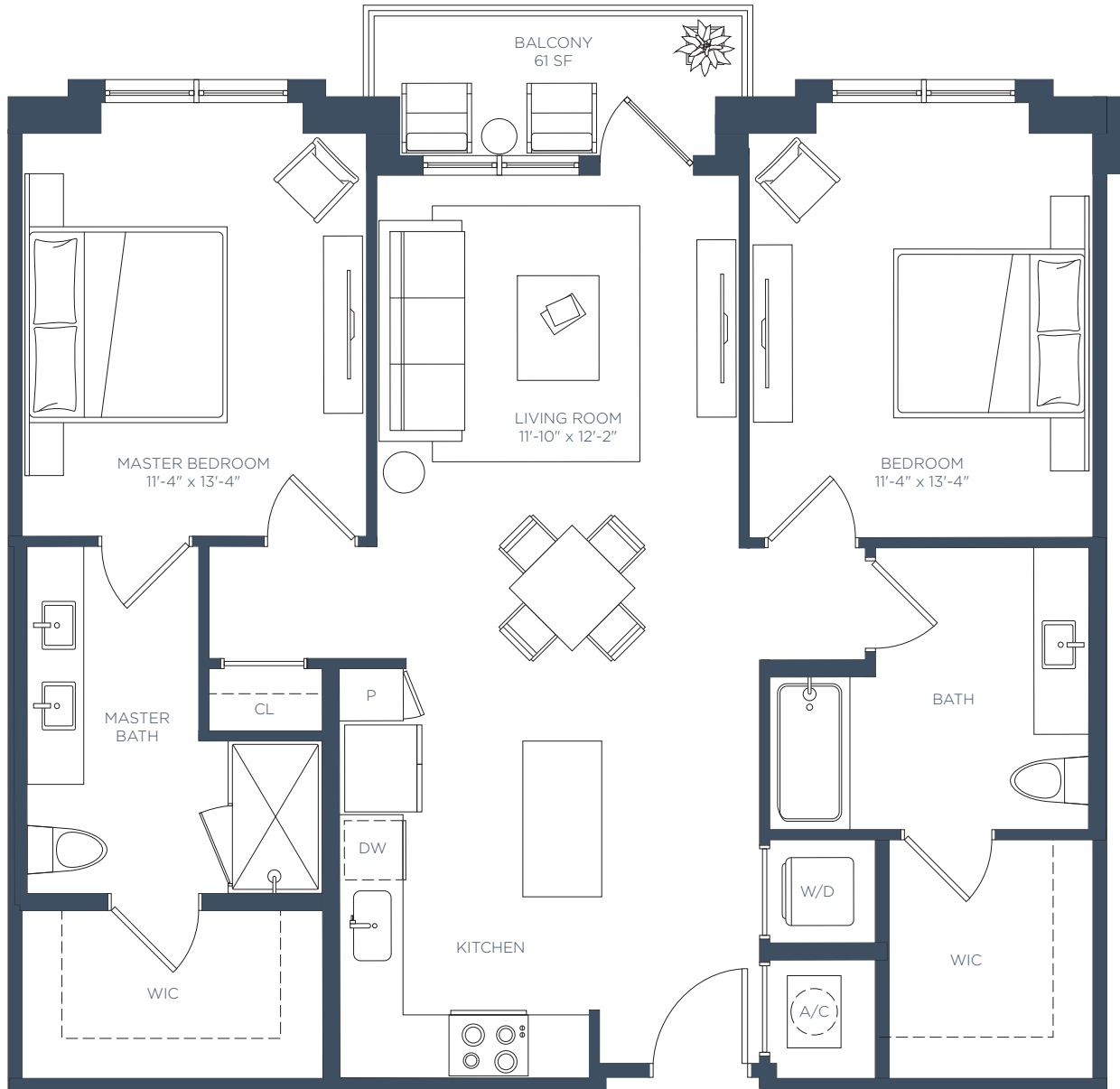


Balconies available in select styles

B5.4

2 BEDS / 2 BATHS

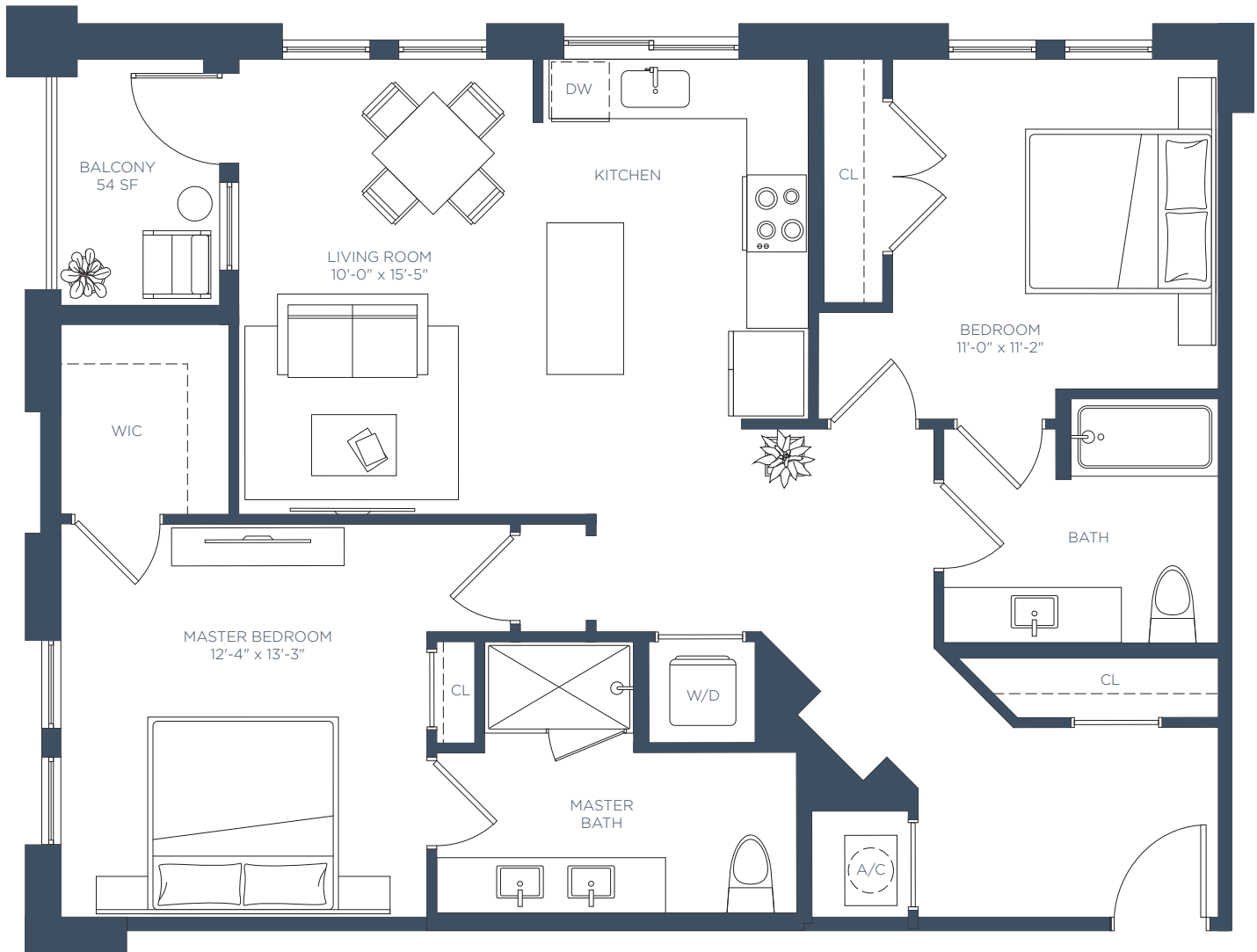
Interior
1,136 SF



B6

2 BEDS / 2 BATHS

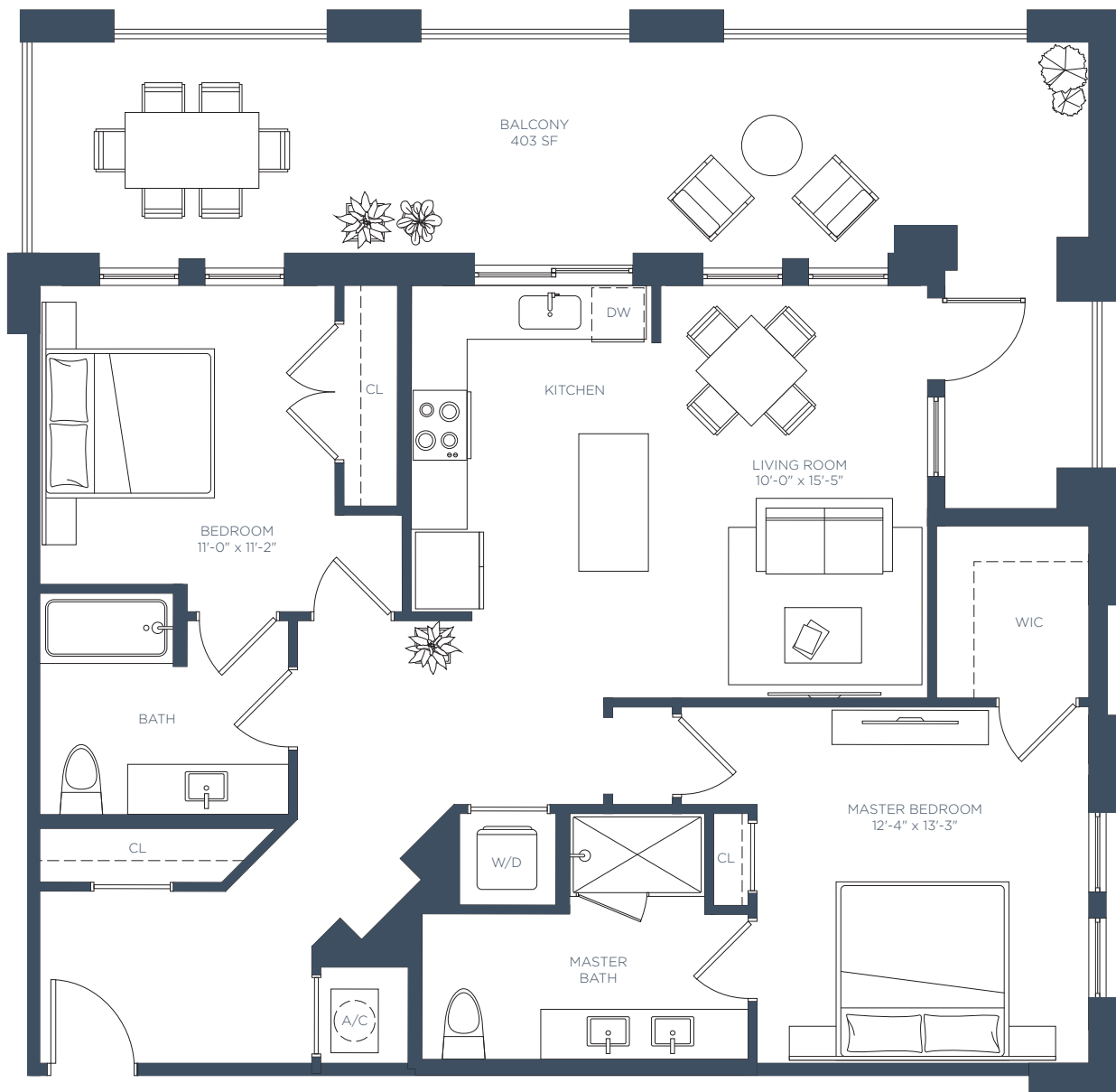
Interior
1,142 SF



B6.1

2 BEDS / 2 BATHS

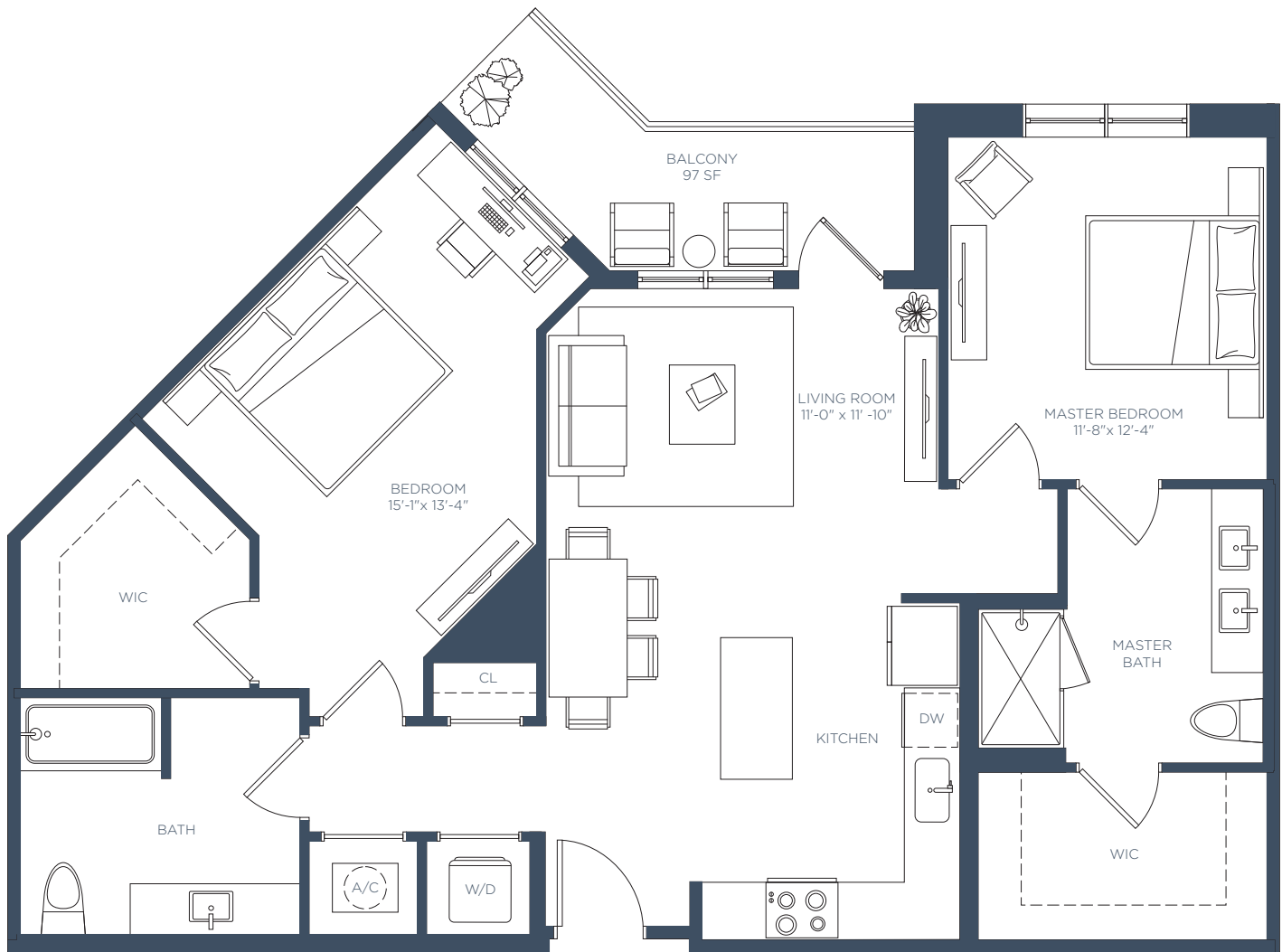
Interior
1,146 SF



B7

2 BEDS / 2 BATHS

Interior
1,185 SF



LEASING CENTER 5180 Peachtree Blvd, Chamblee, GA 30341 | 770-525-6657 | ManorChambleeApts.com

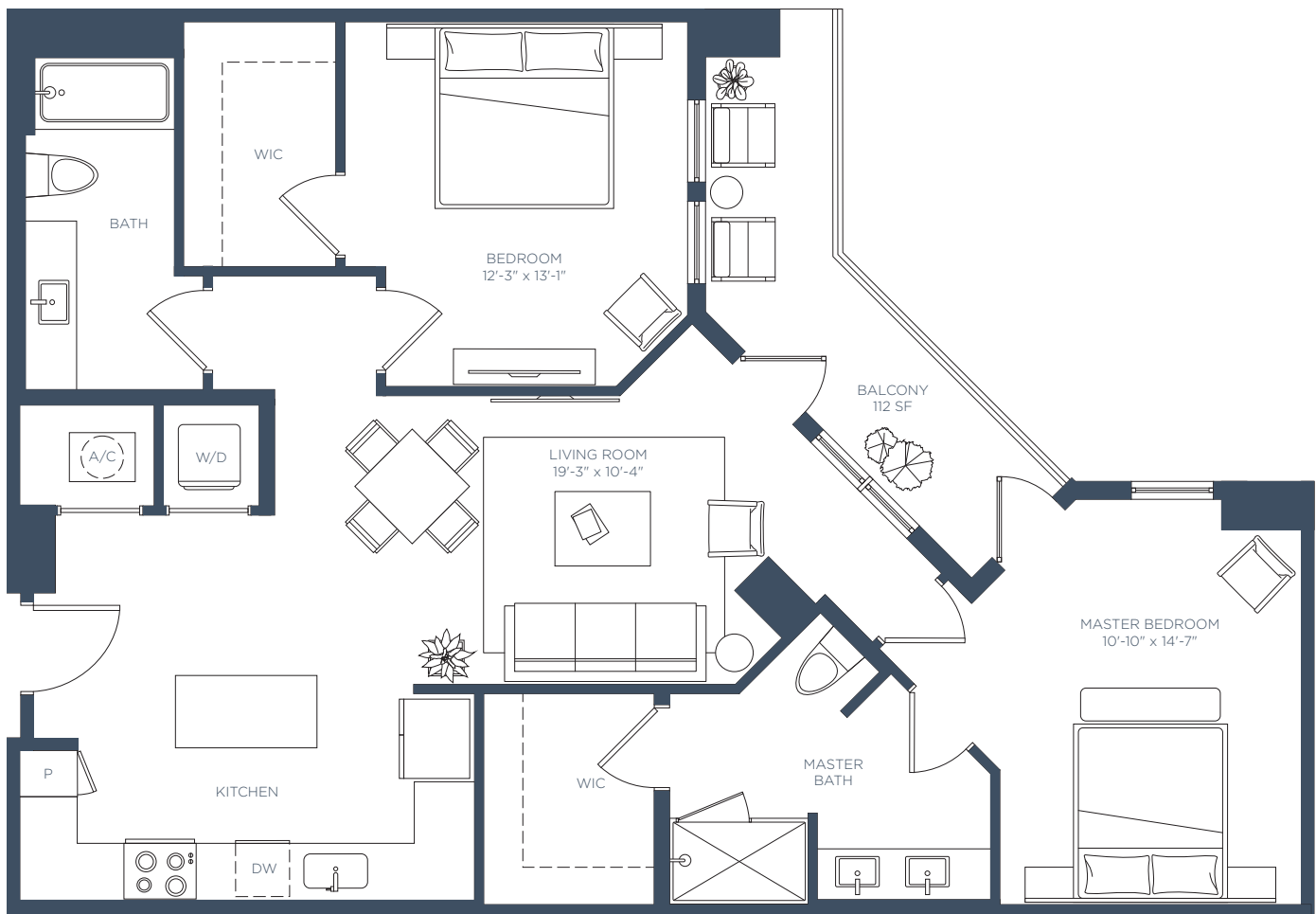


ⓘ The developer is RD Manor Chamblee, LLC ("Developer"), which has a license to use the name and trademarks of The Related Group by license. All renderings, photographs, and images, including floor plans, are intended to illustrate generally the lifestyle and ambiance intended for the completed community along with contemplated unit options, but are not intended as a representation or warranty of any specific community activities or completed unit sizes, dimensions, or designs. The unit size, room dimensions, layout and locations of doors, plumbing, and appliances may be changed at the developer's sole discretion and may vary from the floor plans depicted. Furnishings and décor not included with lease.

B7.1

2 BEDS / 2 BATHS

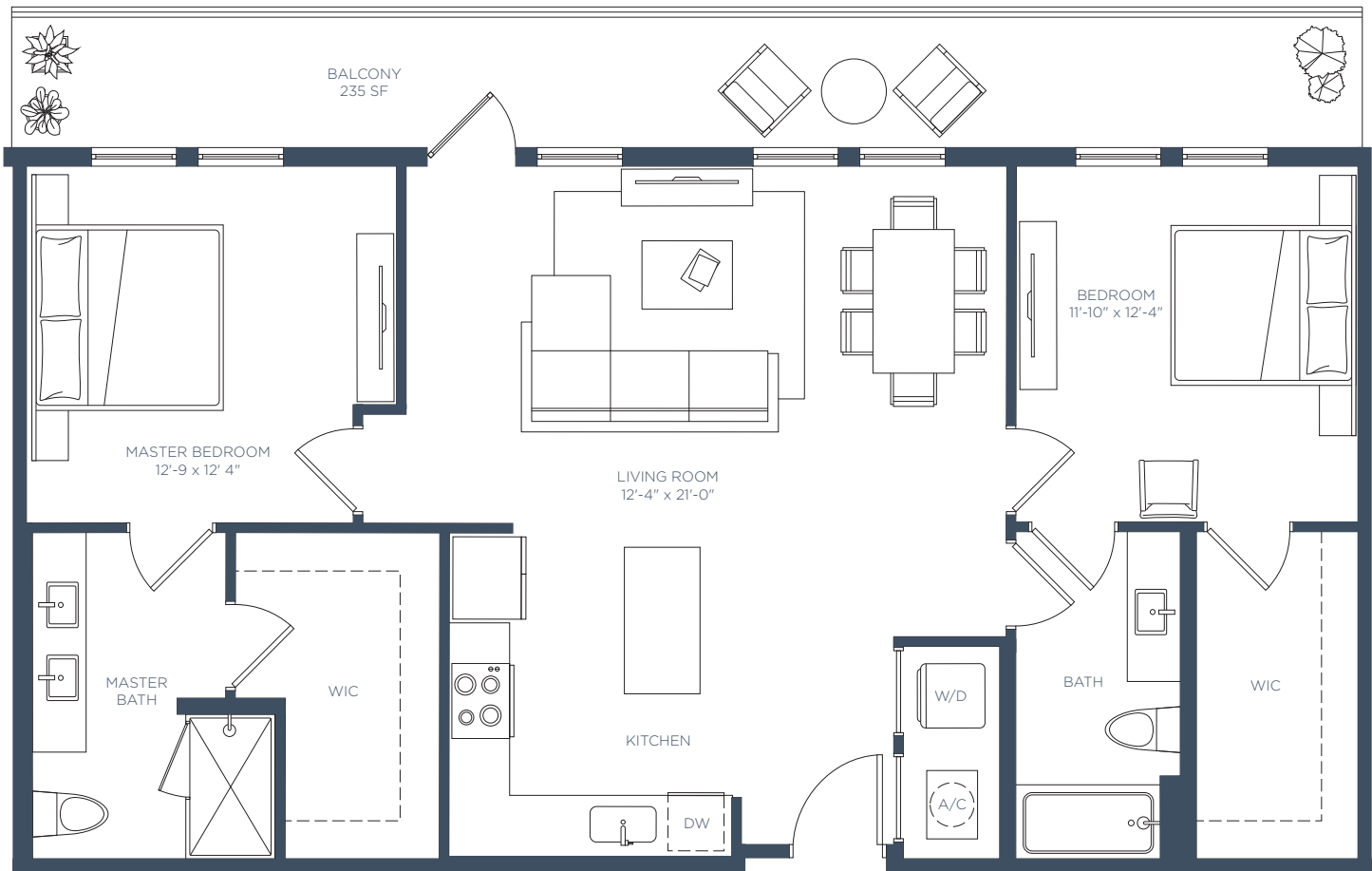
Interior
1,160 SF



B8

2 BEDS / 2 BATHS

Interior
1,172 SF



LEASING CENTER 5180 Peachtree Blvd, Chamblee, GA 30341 | 770-525-6657 | ManorChambleeApts.com

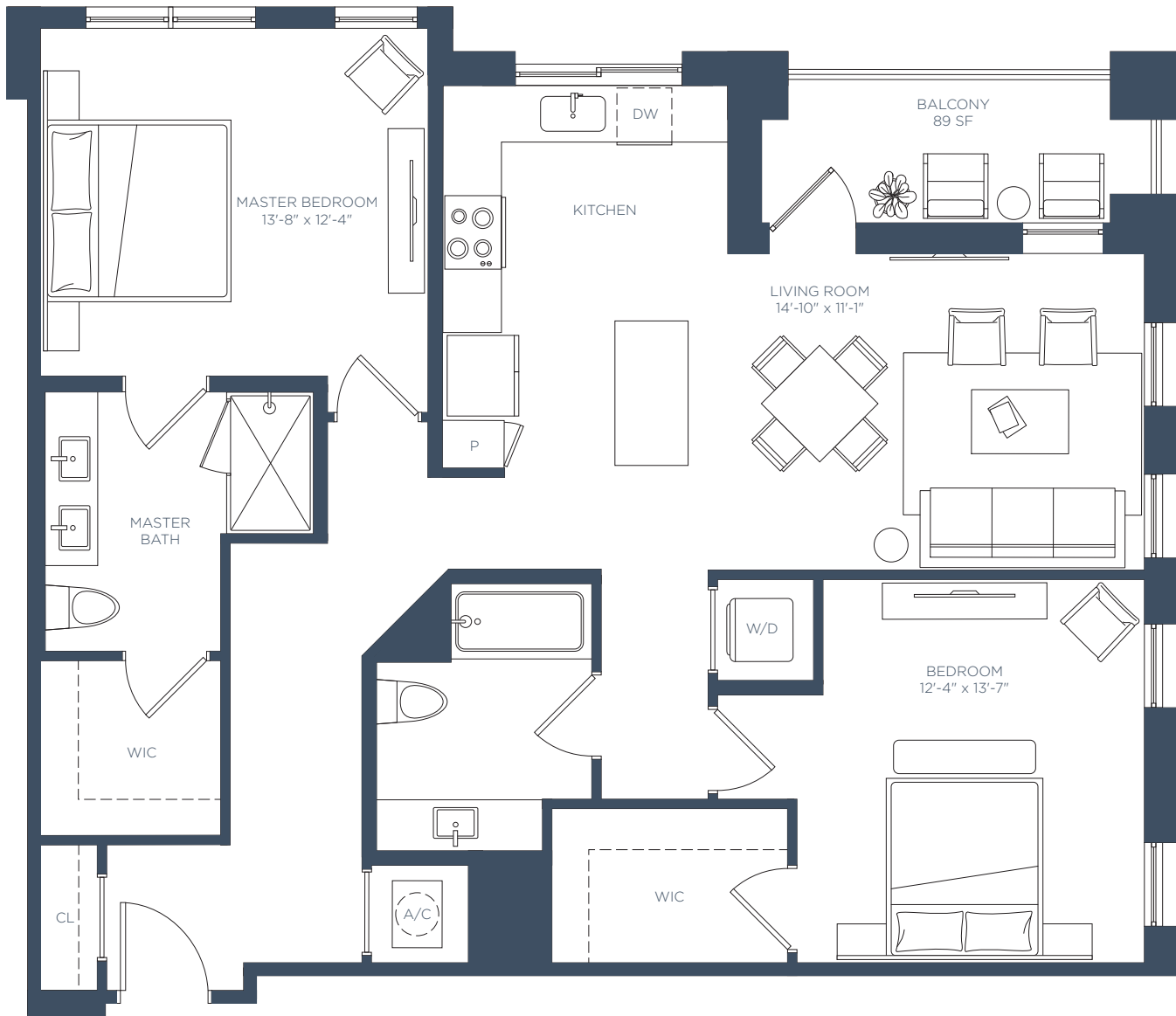


ⓘ The developer is RD Manor Chamblee, LLC ("Developer"), which has a license to use the name and trademarks of The Related Group by license. All renderings, photographs, and images, including floor plans, are intended to illustrate generally the lifestyle and ambiance intended for the completed community along with contemplated unit options, but are not intended as a representation or warranty of any specific community activities or completed unit sizes, dimensions, or designs. The unit size, room dimensions, layout and locations of doors, plumbing, and appliances may be changed at the developer's sole discretion and may vary from the floor plans depicted. Furnishings and décor not included with lease.

B10

2 BEDS / 2 BATHS

Interior
1,233 SF



LEASING CENTER 5180 Peachtree Blvd, Chamblee, GA 30341 | 770-525-6657 | ManorChambleeApts.com



ⓘ The developer is RD Manor Chamblee, LLC ("Developer"), which has a license to use the name and trademarks of The Related Group by license. All renderings, photographs, and images, including floor plans, are intended to illustrate generally the lifestyle and ambiance intended for the completed community along with contemplated unit options, but are not intended as a representation or warranty of any specific community activities or completed unit sizes, dimensions, or designs. The unit size, room dimensions, layout and locations of doors, plumbing, and appliances may be changed at the developer's sole discretion and may vary from the floor plans depicted. Furnishings and décor not included with lease.

C1

3 BEDS / 2 BATHS

Interior
1,347 SF



LEASING CENTER 5180 Peachtree Blvd, Chamblee, GA 30341 | 770-525-6657 | ManorChambleeApts.com



ⓘ The developer is RD Manor Chamblee, LLC ("Developer"), which has a license to use the name and trademarks of The Related Group by license. All renderings, photographs, and images, including floor plans, are intended to illustrate generally the lifestyle and ambiance intended for the completed community along with contemplated unit options, but are not intended as a representation or warranty of any specific community activities or completed unit sizes, dimensions, or designs. The unit size, room dimensions, layout and locations of doors, plumbing, and appliances may be changed at the developer's sole discretion and may vary from the floor plans depicted. Furnishings and décor not included with lease.

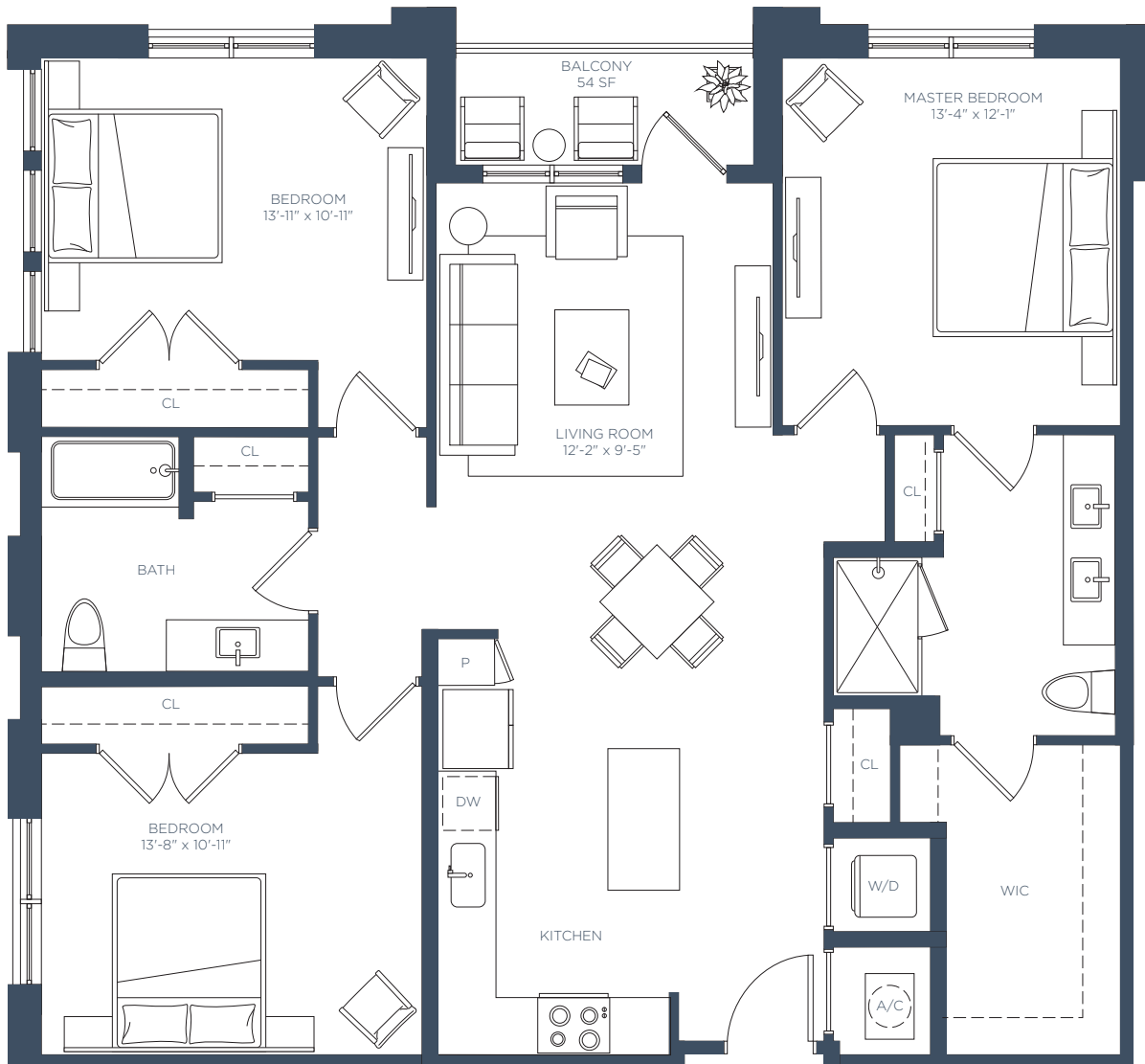
MANOR

RENTAL EVOLUTION
CHAMBLEE

C2

3 BEDS / 2 BATHS

Interior
1,423 SF



LEASING CENTER 5180 Peachtree Blvd, Chamblee, GA 30341 | 770-525-6657 | ManorChambleeApts.com



ⓘ The developer is RD Manor Chamblee, LLC ("Developer"), which has a license to use the name and trademarks of The Related Group by license. All renderings, photographs, and images, including floor plans, are intended to illustrate generally the lifestyle and ambiance intended for the completed community along with contemplated unit options, but are not intended as a representation or warranty of any specific community activities or completed unit sizes, dimensions, or designs. The unit size, room dimensions, layout and locations of doors, plumbing, and appliances may be changed at the developer's sole discretion and may vary from the floor plans depicted. Furnishings and décor not included with lease.

C2.A

3 BEDS / 2 BATHS

Interior
1,423 SF

